



T27 eXpress IT

Table of Contents

Emulation.....	1
T27 eXpress IT Control Panel.....	1
Left Mouse Click	1
Right Mouse Click	1
T27 eXpress IT Screen.....	2
File menu	2
Edit menu.....	4
View menu	4
Macros menu	5
Window menu	5
Help menu.....	5
Input Recall window.....	6
T27 eXpress IT Keyboard Definition window.....	6
Send To	6
Send Contents of Screen as Text	6
Send Screen Window as JPEG Attachment	6
Configuration	7
T27 eXpress IT Configuration.....	7
Environment tabs	7
Connection tab.....	7
Video Options tab.....	8
DataComm Options tab	9
Keyboard Options tab	11
Other Settings tab	13
Application Scheme	13
Restriction Settings/Configure Settings	14
Restriction Settings dialog	14
Use Configuration Lock Options	14
eXpress User Capabilities at a Glance.....	15
Settings Location.....	15
Restricted User Options.....	16
Unlock Configuration.....	17
Apply	17
OK.....	17
Cancel.....	17
eXpress Custom Terminal Screen Appearance.....	17
Appearance Scheme Name	18
New Scheme.....	18
Rename Scheme	18
Delete Scheme.....	19
Screen Color Settings.....	19
Screen Font	20
Automatic Font Scaling.....	21
Default.....	21
Import	21
Export.....	21
Apply	21
OK.....	21
Cancel.....	21
Help.....	21
eXpress Custom Keyboard Layout	21
New Keyboard.....	22
Rename Keyboard	22
Delete Keyboard.....	22
Graphic Keyboard.....	22
Key Actions	23
Type a Key Sequence.....	23
Set Key Assignment.....	23
Undefine Key	23
Default.....	23
Import	23
Export.....	23
Print	23

- OK..... 23
- Cancel..... 23
- Help..... 23
- How to Map or Re-Map a T27 Terminal or a T27 eXpress IT Key 23
- Conflicts 24
- Add or Redefine Key 24
 - Help..... 24
 - Add 24
 - Redefine..... 24
 - Cancel..... 24
- eXpress IT Macro Manager 24
 - Graphic Keyboard 25
 - Available Macros 25
 - New Macro 26
 - Edit Macro 26
 - Delete Macro 26
 - Show in Menu 26
 - Type Sequence 26
 - Set Assignment 26
 - Clear Assignment 26
 - How to Assign a Macro Activation Key 26
 - Conflicts 26
 - Edit Macro 26
 - Key Macro Name 27
 - Macro Function List..... 27
 - Add 27
 - Replace 28
 - Delete..... 28
 - Move Up..... 28
 - Move Down..... 28
 - Revert..... 28
 - OK..... 28
 - Cancel..... 28
 - Edit Prompt for Text 28
 - Enter User Prompt..... 28
 - Password Entry 28
 - OK..... 28
 - Cancel..... 28
 - Position Cursor 28
 - Column 28
 - Row 29
 - OK..... 29
 - Cancel..... 29
 - Select Terminal Key Function..... 29
 - Type List Search String 29
 - OK..... 29
 - Cancel..... 29
 - Text String 29
 - Enter a Text String 29
 - OK..... 29
 - Cancel..... 29
 - Timed Wait..... 29
 - Enter Wait Time in Seconds 29
 - OK..... 29
 - Cancel..... 29
 - Wait for String 29
 - String Value..... 30
 - String Location..... 30
 - Wait for String To Be 30
 - Wait Time (seconds) 30
 - OK..... 30
 - Cancel..... 30
- T27 Character Translation Configuration 30
 - Character Translation Edit 31
 - Application Color Scheme Preferences..... 32
 - Schemes 33

- Button Effects 33
- Form Color Preview..... 34
- Window Effects 35
- Set to Defaults 35
- Apply 35
- OK..... 35
- Cancel..... 35
- Application Color Selector..... 35
 - Std. Color Dialog 36
 - Apply 36
 - OK..... 36
 - Cancel..... 36
- Lock Config. Initial Password window 36
 - New Password..... 36
 - Reenter New Password to Confirm 36
 - OK..... 36
 - Cancel..... 36
- Unlock Config. Password window 37
 - Enter Password 37
 - New Password..... 37
 - Reenter New Password to Confirm 37
 - OK..... 37
 - Cancel..... 37
- T27 eXpress IT Settings 37
 - Delete Source Settings..... 38
 - Set 38
 - Cancel..... 38
- How to 39**
 - Selecting with the Mouse..... 39
 - Running without the Control Panel..... 39
 - Configuring T27 Keys..... 39
 - Recall Recent Input 40
 - Displaying T27 eXpress IT Keyboard Definitions 40
- Miscellaneous 41**
 - Command Line Options 41
 - Font Limitations 41
 - Technical Support 41
- Index 43**

Emulation

T27 eXpress IT Control Panel

The **T27 eXpress IT Control Panel** initially appears when the **T27 eXpress IT** program is executed from the T27 eXpress IT folder. The control panel contains a series of functions that permit you to establish emulation sessions with the host and control the disposition of the control panel. Additionally, a configuration command is available allowing font and color selection, configurable T27 keys, screen size selection, route selection and other standard T27 controls.



Left Mouse Click

A left mouse click on the following button controls allows you to establish host connections, to configure T27 eXpress IT, etc.:



Environment Buttons

Press any of the numbered buttons to open a dialog with the host.

The maximum number of environments that may be configured is two



Minimize All

Press this button to minimize the T27 eXpress IT Control Panel and all active T27 eXpress IT windows.



Configure

Press this button to initiate the **T27 eXpress IT Configuration** dialog where the appearance and behavior of T27 eXpress IT may be changed.



Help

Press this button to receive help for the T27 eXpress IT Control Panel.



Exit

Press this button to close all environments currently opened and terminate T27 eXpress IT.

Right Mouse Click

A right mouse click anywhere within the control panel will present a menu that allows you to control sessions, to position the button bar, etc.:

Open Screens

Move the mouse cursor over this selection to view a menu of configured screens. Only the screens not currently opened will be enabled for selection.

Close Screens

Move the mouse cursor over this selection to view a menu of configured screens. Only the screens currently opened will be enabled for selection.

Close All

Left mouse click this selection to close all screens currently opened and terminate T27 eXpress IT.

Minimize Application

Left mouse click this selection to minimize the T27 eXpress IT Control Panel and all active screens.

Keep on Top

Use this selection as a toggle. **Keep on Top** will force the Control Panel to be displayed on top of all other windows. If this selection is not checked, the Control Panel may be hidden from view by selecting/moving another window over it.

Auto Hide

When the control panel is docked to an edge of the desktop, selecting this option will cause the control panel to hide when the mouse cursor is away from the edge.

Note: To dock the control panel, drag and drop the control panel with the mouse to any edge (left, right, top or bottom) of the desktop display.

Transport Trace

Use this selection to create a diagnostic trace at the transport level. This selection should only be used if requested by KMSYS Worldwide's support personnel.

ETEM Trace

Use this selection to create a diagnostic trace at the ETEM level. This selection should only be used if requested by KMSYS Worldwide's support personnel.

T27 eXpress IT Screen

A **T27 eXpress IT Screen** window contains all the necessary Windows controls to manage a host connection. Controls are available to control the size of the font displayed and the spacing between lines. There are also controls to perform print functions, recall previously entered input, execute user-developed scripts, etc.

When multiple screens are open, you may use the **Esc** key to switch between non-minimized screens. Likewise, the **Next Window** selection from the **Window** menu will switch between non-minimized screens.

The following is an explanation of each menu selection or control. When shortcut keys are available, the key combination (e.g., **Ctrl+P**) is shown to the right of the menu selection.

File menu

The **File** menu contains controls to configure the appearance and behavior of T27 eXpress IT and to manage the print environment of T27 eXpress IT.

Print Screen (text only)

Use this selection to print only the text portion of the screen without delimiters.

Note: For passthrough printing, run the T27 eXpress IT Passthrough Print Manager program.

Print Screen (with delimiters) Ctrl+P

Use this selection to print an exact image of the entire screen, including delimiters.

Print Unprotected

Use this selection to print only the unprotected text on the screen.

Print Capture

Use this toggle in conjunction with the Print commands to capture screen images and save them to a text file. When this selection is checked, the Select Print Text File dialog appears allowing you to select a text file in which to save the images. Next, use one of the Print commands to write the screen image to the file. Multiple screens may be saved by using multiple Print commands. To close the text file, select Print Capture again.

Print Window Image

Use this selection to print the entire window including the screen and the Windows controls surrounding the screen.

Printer Setup...

Use this selection to select a printer for use in future print operations.

Capture Screen

Use this selection to capture the currently selected screen.

Print Captured Screens...

Use this selection to print any captured screens.

Save Captured Screens...

Use this selection to save any captured screens to a text file.

Clear Captured Screens

Use this selection to clear the captured screen stack.

Send To...

Use this button to send a copy of the screen through your mail system.

Diagnostics**Trace to Window**

Use this selection to initiate the T27 eXpress IT trace facility. All communications between T27 eXpress IT and the host will be displayed in a separate window.

Note: A right mouse click in the trace window will reveal a menu containing three selections that control the trace window: **Stay on Top**, **Copy to Clipboard** and **Clear**. **Stay on Top** controls whether the trace window remains on top (the default) of the emulator window during the trace, or remains in the background. **Copy to Clipboard** may be used to copy the contents of the trace window to the Windows clipboard for subsequent pasting into another Windows application (e.g., Notepad, WordPad, etc.). **Clear** may be used to clear the contents of the trace window.

Trace to File

Use this selection to initiate the T27 eXpress IT trace facility. This selection is the same as Trace to Window except that the trace information will be written to a user-named file.

Trace to Both Window and File

Use this selection to initiate the T27 eXpress IT trace facility. This selection is a combination of the two above.

Clear Trace Window

Use this selection to clear the trace window and/or file without terminating the trace. This selection appears after a trace has been initiated.

Close Trace

Use this selection to close the trace window and/or file and terminate the trace.

FCC Map

Use this selection to display an FCC Map. Use only at the request of KMSYS Worldwide's support personnel.

Note: The previous three selections only become visible once the trace has been started.

Customize

Use this selection to customize the appearance and functionality of this screen. Note: All of these settings may also be changed from the configuration program.

Custom Keyboard Layout

Use this selection to modify a keyboard configuration. The initial configuration shown will be for the keyboard assigned to this screen.

Select Keyboard Layout

Use this selection to assign a preconfigured keyboard to this screen.

Screen Appearance

Use this selection to modify a screen appearance scheme. The initial configuration shown will be for the scheme assigned to this screen.

Select Screen Appearance

Use this selection to assign a preconfigured screen appearance to this screen.

Close

Use this selection to break the host connection and terminate this T27 eXpress IT window.

Edit menu

The **Edit** menu contains controls to manage selected text between the screen and the Windows clipboard.

Copy Ctrl+C

Use this selection to copy selected data onto the clipboard. This command is unavailable if there is no data currently selected. Note: Copying data to the clipboard replaces the contents previously stored there.

Data may be selected by placing the mouse cursor at some point on the screen, and holding down the left mouse button, drag the mouse cursor to any other location on the screen. Upon releasing the left mouse button, the data will be selected.

An alternate form of selection is with standard, keyboard key sequences. With the mouse or arrow keys, place the screen text cursor at some point on the screen and use any of the following key sequences to highlight the data being selected:

Shift+Home selects everything from the cursor position through column one of the same row.

Shift+End selects everything from the cursor position through the last column of the same row.

Shift+Right Arrow extends/contracts the selection to the right.

Shift+Down Arrow extends/contracts the selection down the screen.

Shift+Left Arrow extends/contracts the selection to the left.

Shift+UP Arrow extends/contracts the selection up the screen.

Cut Ctrl+X

Use this selection to remove the currently selected data from the document and put it on the clipboard. This command is unavailable if there is no data currently selected.

Cutting data to the clipboard replaces the contents previously stored there.

Paste Ctrl+V

Use this selection to insert a copy of the clipboard contents at the insertion point. This command is unavailable if the clipboard is empty.

Note: Use a right mouse click anywhere on the screen to reveal a Copy/Cut/Paste popup menu.
--

Input Recall Ctrl+I

Use this selection to initiate the Input Recall window. This selection allows previous lines transmitted to the host to be recalled and retransmitted.

Rectangle Block Selection

This option allows the selection of text as a rectangle. When the left mouse button is held down and the mouse cursor dragged diagonally across the screen, a rectangular block of text is selected.

Linear Block Selection

This option allows the selection of text as a block of lines. When the left mouse cursor is held down and the mouse cursor is dragged up or down, each line that the mouse cursor passes through will be selected.

View menu

The **View** menu contains controls that adjust the appearance and functional state of T27 eXpress IT.

Show Keyboard Help Window... Alt+K

Use this selection to display the T27 eXpress IT Keyboard Definition window.

Show Mouse Tracking

Use this selection to toggle between displaying the mouse pointer's row and column and the text cursor's row and column. The display appears on the left side of the status bar at the bottom of the screen. This feature allows the user to determine row and column coordinates of protected fields, which can be handy for script writers.

Show Reference Grid

Use this selection to toggle the display of a reference grid over the screen. The grid is useful when developing scripts. The reference grid makes it easy to find column/row coordinates while a script dialog is displayed. You cannot use mouse tracking once a script dialog is up, but you can see and count lines and columns on the reference grid.

Show Control Characters

Use this selection to toggle the display of control characters (Tab, Form-Feed, Line-Feed, etc.).

Macros menu

The **Macros** menu is used to control the key macro recorder and to provide access to macros placed for selection on the menu.

Macros

Use this selection to drop down a list of user-created key macros.

Use the **Macro Manager** selection (see the **Other Settings** tab after clicking the **Configure T27 eXpress IT** button on the **T27 eXpress IT Control Panel**) to develop and maintain macros and the **Macros** menu.

Start Macro Recorder

Use this selection to begin the Key Macro Recording (Note: A recorder icon will appear in the status line at the bottom of the window signifying that the recorder is active). All keystrokes entered will be collected until the recording is terminated with the **Stop Macro Recorder** selection.

Stop Recorder

Use this selection to terminate the macro recorder. Upon making this selection, the **Save Key Macro** dialog will allow the macro to be named and saved.

Window menu

The **Window** menu contains a selection controlling the T27 eXpress IT window size in relationship to the font size.

Resize Window to Font

Use this selection to resize the T27 eXpress IT window to conform to the selected font size.

Hide Control Panel/Show Control Panel

This toggle hides or displays the T27 eXpress IT Control Panel. Note: If all screens are closed while the Control Panel is hidden, the Control Panel will be automatically displayed. This menu item is disabled if the NCP (No Control Panel) command line parameter is used.

Next Window Ctrl+Page Down

Use this selection to switch between non-minimized screens.

Help menu

The **Help** menu contains selections that provide complete on-line help and T27 keyboard assistance.

Contents

Use this selection to run Windows Help for T27 eXpress IT and display the **Contents** topic. All on-line help may be reached from this topic.

This Window

Use this selection to run Windows Help for T27 eXpress IT and display this topic.

About

Use this selection to display version and copyright about T27 eXpress IT.

Input Recall window

T27 eXpress IT, when in non-forms mode, saves single-line messages sent to the host system when you press the transmit key. A maximum of 200 of the most recent messages is saved. You can display a list of these messages from the **Edit, Input Recall** menu selection, or by pressing the **Input Recall** key (**Ctrl+I**).

Paste

When this list is displayed in the **Input Recall** window, you can view the entries and optionally select an entry to be "pasted" onto the current screen when the **Paste** button is pressed.

Transmit

The **Transmit** button performs the same operation as the **Paste** button, but also ends by transmitting to the host (double clicking on the entry also performs the paste-and-transmit operation).

Close

Use this button to close the **Input Recall** window.

T27 eXpress IT Keyboard Definition window

This window displays all the standard T27 keys and their corresponding keyboard keystrokes. Any T27 key may be issued by double-clicking the left mouse button over the T27 key name. Additionally, the window may remain open as a visual reference when entering T27 key sequences from the keyboard.

Stay on Top

Check this box to force the window to remain visible while working on an emulator screen.

Keep Active on Show

Check this box to keep focus on the **T27 eXpress IT Keyboard Definition** window when the window first comes up. When not checked, focus will immediately return to the main emulator window.

Close

Use this button to close the **T27 eXpress IT Keyboard Definition** window.

Send To ...

Use this dialog to select the Send option desired.

Send Contents of Screen as Text

Set this option to capture the contents of the screen as text. When the **OK** button is pressed, the text will appear in the message portion of the compose dialog displayed by your mail system.

Send Screen Window as JPEG Attachment

Set this option to capture the contents of the screen as a JPEG image. When the **OK** button is pressed, the image will be inserted as an attachment to your mail message.

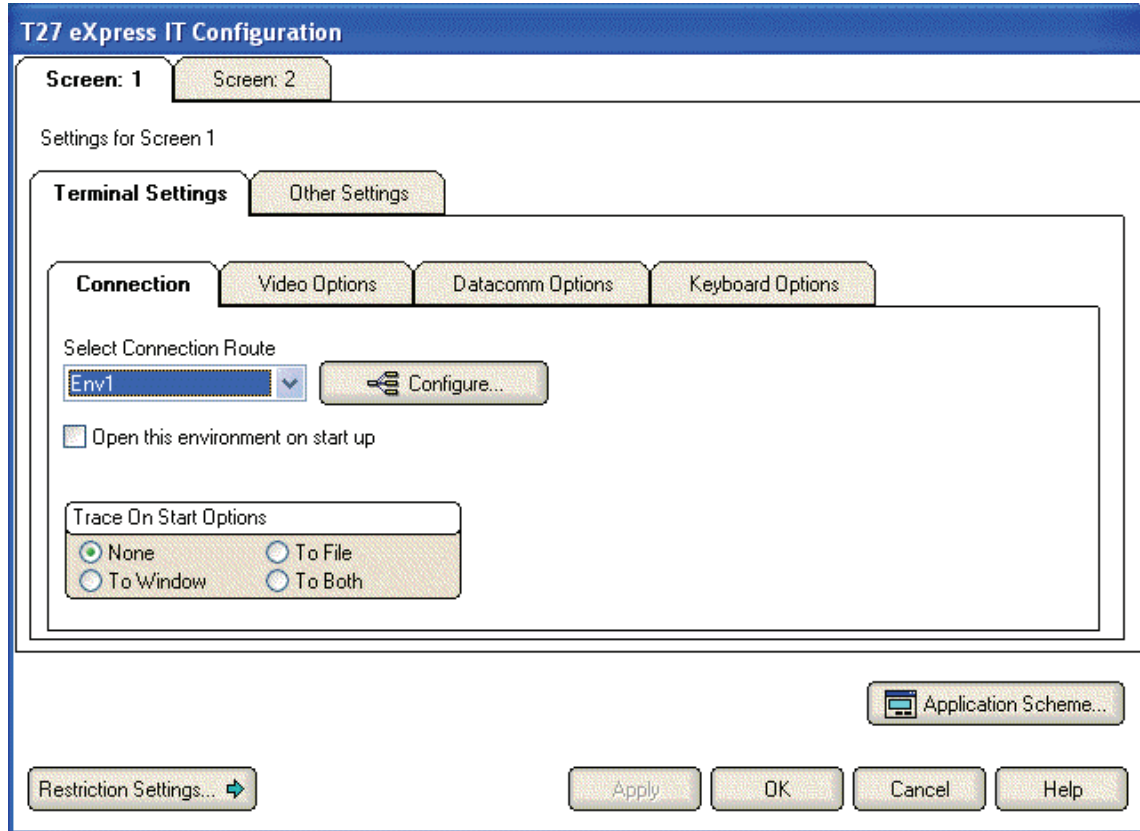
Configuration

T27 eXpress IT Configuration

The **T27 eXpress IT Configuration** dialog contains configuration options that assign the communication route to be used when the screen is opened. The dialog is also used to set T27 general options for the screen. Each screen may also have its own keyboard layout and appearance scheme assigned.

Environment tabs

Select the environment tab you wish to configure.



Connection tab

This tab contains controls that may be used to assign a configured route to an environment.

Select Connection Route

This drop-down list box contains the names of all configured routes. To assign a route to an environment, select one from this list. Once a route is assigned, its corresponding numbered button will be enabled on the T27 eXpress Plus Control Panel .

Configure

Click this button to configure the routes and virtual destinations required to connect to a host (Note: Each screen in use should have its own configured route). When complete, use the **Select Connection Route** drop-down list box to link a newly configured route to the selected screen.

Open This Environment on Start

Check this box to automatically connect to the route when T27 eXpress Plus is first started.

Trace on Start Options

The controls in this group determine what trace activity is to take place, if any, when the screen is first opened.

None

When this option is set, no tracing activity will take place.

To Window

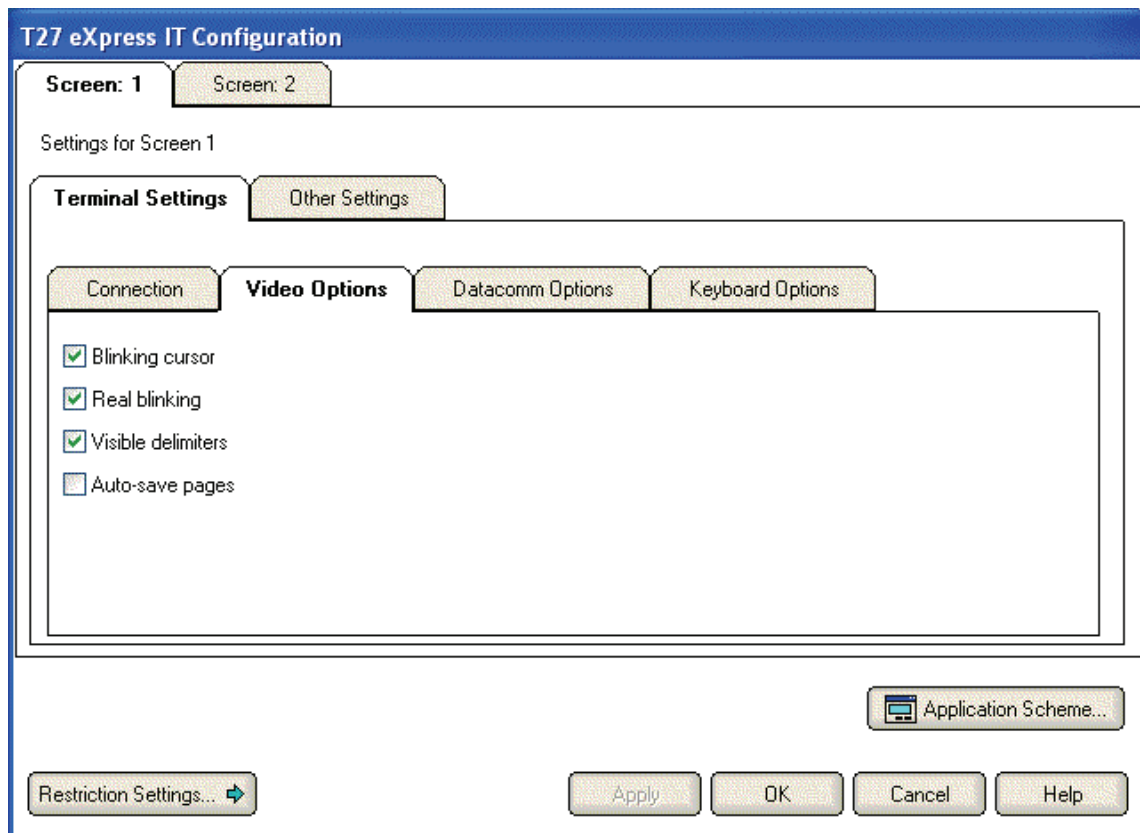
When this option is chosen, a separate trace window will open to display the trace.

To File

This option will cause the **Emulator TraceFile** dialog to open when the screen is opened. In this dialog, enter the text file name for the trace file. The trace file is normally stored in C:\Documents and Settings\\Local Settings\Temp directory and will have a .txt extension..

To Both

Select this option to trace to a window and file.



Video Options tab

The options on this tab govern the state of the monitor display. Multiple options may be selected.

Blinking Cursor

Checking this box causes the current cursor position to blink. If this box is not checked the cursor remains solid.

Real Blink

Check this box to cause data fields having the blinking attribute to blink on and off.

If the **Real Blink** option is not used, blinking text will appear in the colors as configured for the **Blinking** option. The **Blinking** may be set on the Color/Font Schemes tab of the **T27 eXpress Plus Configuration** dialog.

Visible Delimiters

Check this box to display field delimiters when in forms mode (see **Toggle Forms**, below).

Auto-save Pages

When this box is checked, the contents of all pages in an environment are saved to disk when the environment is closed. The pages are then restored when the environment is re-opened.
 Note: As a result of this action, page one will be overwritten on start up.

The screenshot shows the 'T27 eXpress IT Configuration' dialog box. At the top, there are tabs for 'Screen: 1' and 'Screen: 2'. Below this, it says 'Settings for Screen 1'. There are two main tabs: 'Terminal Settings' and 'Other Settings'. Under 'Terminal Settings', there are four sub-tabs: 'Connection', 'Video Options', 'DataComm Options', and 'Keyboard Options'. The 'DataComm Options' sub-tab is currently selected. It contains several checkboxes and options:

- Transmit full page in Forms mode
- Convert CR to CR LF
- Convert LF to CR LF
- SOH clears screen
- SOH clears forms mode
- Position to left of UPF
- Start all pages in Forms mode
- Transmit Line At a Time
- Hold in RCV mode
- Beep alarm sound
- SO/SI translation
- SO/SI extended characters
- DC2 Function:
 - Toggle Forms
 - Advance Page
- DC1 Function:
 - Stay in RCV
 - Line Clear
- Alternate Delimiters:
 - Left character (hex)
 - Right character (hex)

At the bottom of the dialog, there are buttons for 'Restriction Settings...', 'Apply', 'OK', 'Cancel', and 'Help'. There is also an 'Application Scheme...' button with a monitor icon.

DataComm Options tab

The options on this tab govern communications between the host and PC. Multiple options may be selected.

Transmit Full Page in Forms Mode

Check this box to cause the full page to be transmitted to the host when in forms mode (see **Toggle Forms**, below). If this box is not checked, only the unprotected data from the home position to the cursor will be transmitted.

Convert CR to CRLF

Check this box to cause a line feed character to be appended to any carriage return character sent by the host application.

Convert LF to LFCR

Check this box to cause a carriage return character to be appended to any line feed character sent by the host application.

SOH Clears Screen

Check this box to cause the screen to be cleared upon receipt of an SOH character.

SOH Clears Forms Mode

Check this box to cause forms mode to be terminated upon receipt of an SOH character.

Position to Left of UPF

When this option is checked, the effect of the Home function places the text cursor to the first character position of a right justified, unprotected field; otherwise, the cursor will be moved to the data entry position, or rightmost position of the field.

Start All Pages in Forms Mode

Check this box to set all pages initially to Forms mode. See also, **Transmit Full Page in Forms Mode**, above, and **Toggle Forms**, below.

Transmit Line at a Time

Check this box to force the normal Transmit to act like the Transmit Line key.

Hold in RCV Mode

Check this box to cause the screens to remain in receive mode after getting a message from the host application (see **Stay in RCV**, below).

Beep Alarm Sound

Checking this box turns audible beep on. If this box is not checked, no audible sound will be heard.

SO/SI Translation

Check this box to enable SO/SI (7-bit to 8-bit/8-bit to 7-bit) character translation on data transmitted to the host.

SO/SI Extended Characters

Check this box to enable SO/SI (7-bit-to-8-bit/8-bit-to-7-bit) character translation on data received from the host. This option is not required if the host transmission is prefixed by ESC SO sequences.

DC1 Function

The mutually exclusively options in this group instruct T27 eXpress Plus how to interpret the DC1 character when received from the host.

Stay in RCV

Choose this option to keep the screens in receive mode upon receipt of a DC1 character. This option nullifies the **Hold in RCV** option (see above).

Line Clear

Chose this option to clear the line upon receipt of the DC1 character.

DC2 Function

The option buttons in this group instruct T27 eXpress Plus how to interpret the DC2 character when received from the host.

Toggle Forms

Choose this option to toggle to/from forms mode upon receipt of the DC2 character.

Advance Page

Choose this option to stay in the current mode (forms or no-forms) and advance the DataComm pointer one position to the right upon receipt of the DC2 character.

Alternate Delimiters

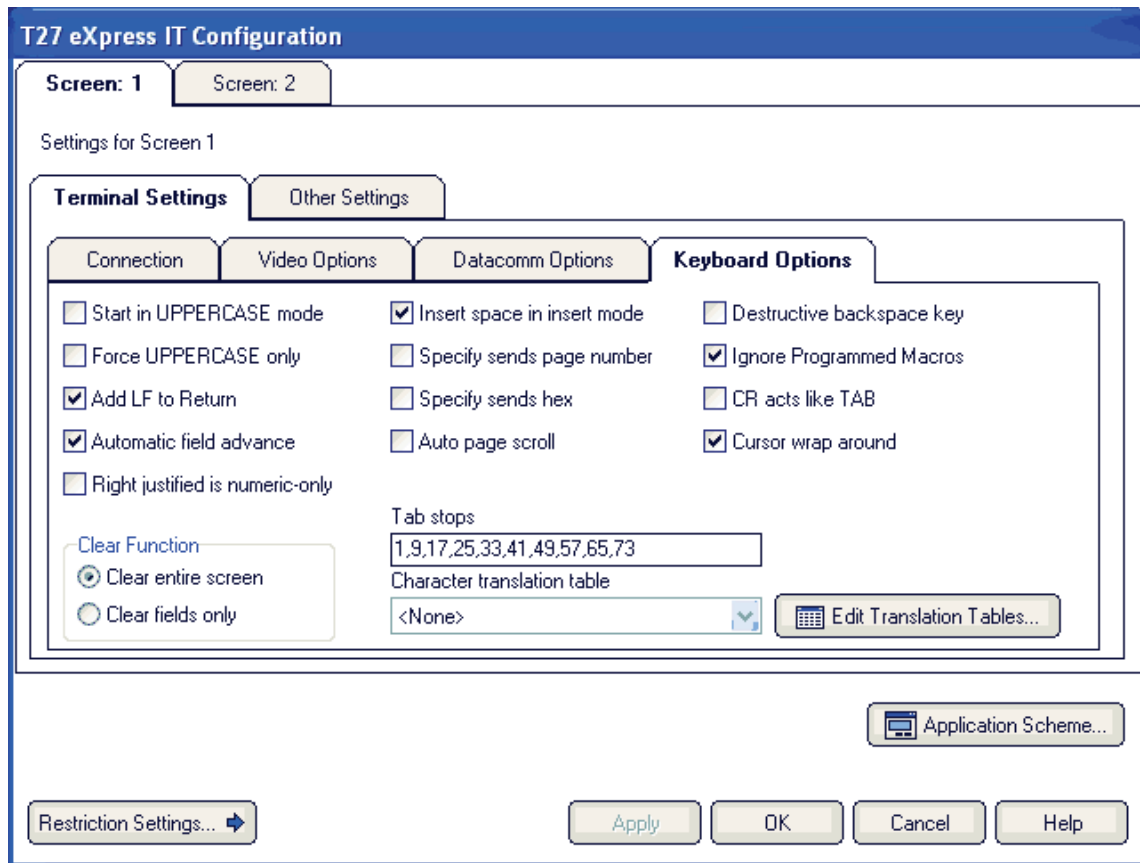
In this group, enter the alternate delimiters sent by the host application. Use of alternate delimiters only applies when in forms mode.

Left Character (hex)

In this text box, enter the hex character sent and interpreted as the beginning delimiter of left-justified unprotected fields. The default is the **US** character (1F).

Right Character (hex)

In this text box, enter the hex character sent and interpreted as the ending field delimiter. The default is the **RS** character (1E).



Keyboard Options tab

The options on this tab govern keyboard actions. Multiple options may be selected.

Start in UPPERCASE Mode

Check this box to convert lowercase characters that are typed to their uppercase equivalents when the environment is first opened. This option may be overridden with the Shift+<alpha key>, Ctrl+U (upper only off) and Shift+Ctrl+U (upper only on).

Force UPPERCASE Only

Check this box to convert lowercase characters that are typed to their uppercase equivalents. This option may not be overridden by keystrokes or the host program.

Add LF to Return

Check this box to cause a line feed character to be appended when the **Carriage Return** key (Enter) is issued. If this box is not checked, only the carriage return is issued.

Automatic Field Advance

Check this box to advance the cursor automatically to the next field when the current field becomes full.

Right Justified is Numeric-Only

If this box is checked, only the characters 0-9, space, period (.) and comma (,) will be allowed in a right-justified field. If the box is not checked, any character will be accepted.

Insert Space in Insert Mode

Check this box to cause a space to be inserted whenever the **Insert** key is struck.

Specify Sends Page Number

Check this box to cause the page number (in addition to the normal column and row designating the cursor position) to be sent the host application when the Specify key is pressed.

Specify Sends Hex

Check the box to cause the cursor position (column and row) to be sent in hexadecimal when the Specify key is pressed. When this box is not checked, the cursor position is reported in ASCII.

Destructive Backspace Key

Check this box to erase characters as the Backspace key is struck.

Ignore Programmed Macros

When checked, this box will cause the emulator to ignore any host or manually programmed T27 macro keys. Checking this box does not prevent Enable scripts related to action keys from running. The box is checked by default.

CR acts like TAB

Check this box to make the Carriage Return key (Enter ↵) behave like the Tab key.

Tab Stops

In this text box, enter the column positions (separated by commas) of the tab stops. The default is 1,9,17,25,33,41,49,57.

Character Translation Table

From this drop-down list box, select a country that most closely matches your keyboard requirements.

Clear Function

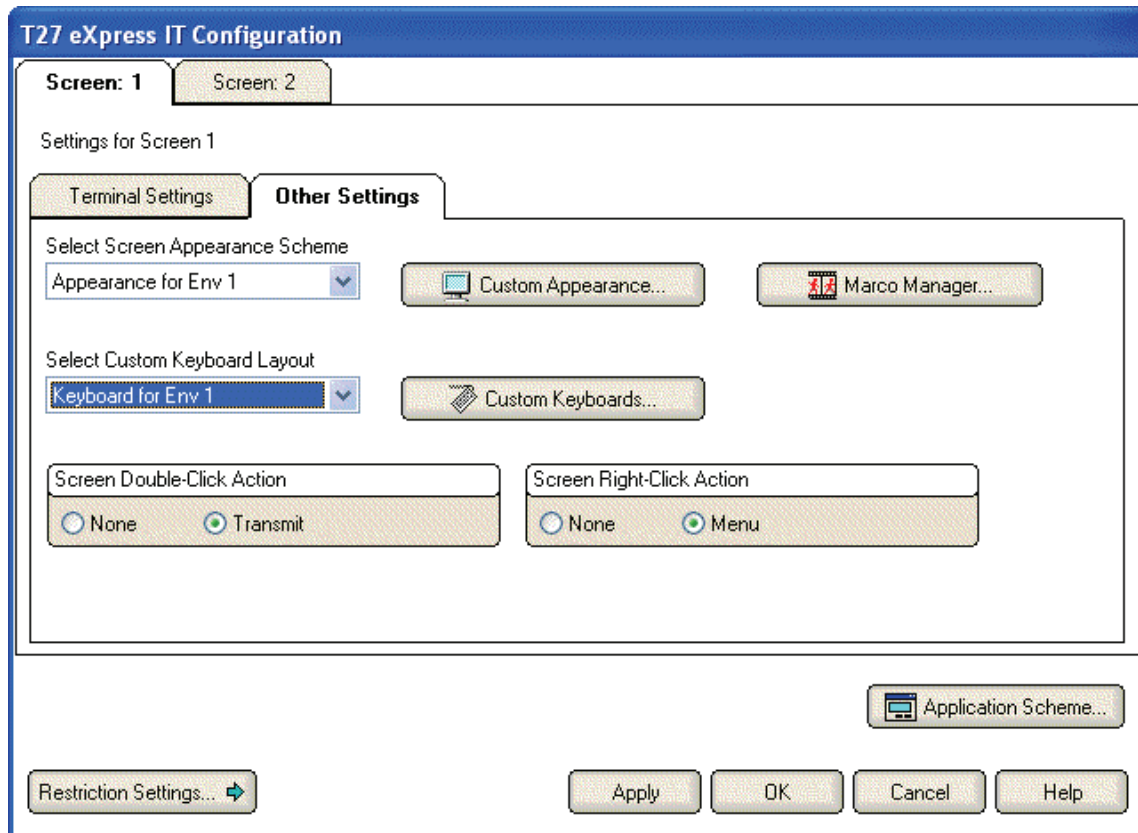
The mutually exclusively option in this group specifies what action occurs when the **Clear** key is pressed.

Clear Entire Screen

Select this option to clear the entire screen.

Clear Fields Only

Select this option to clear all unprotected fields.



Other Settings tab

The controls on this tab may be used to customize the screen's appearance (color, font, scaling, etc.) and configure keys and assign keyboards.

Select Screen Appearance Scheme

From this list, select a previously configured (see **Custom Appearance**, below) appearance scheme to be applied to this screen. Note: This selection only affects the appearance of the screen portion of the screen window. To alter the appearance of the entire T27 eXpress Plus application, use the **Application Scheme** button at the bottom of the eXpress Plus Configuration window (see below).

Custom Appearance

Click this button to open the Custom Terminal Screen Appearance window and configure an appearance scheme that may be applied to one or more screens.

Macro Manager

Use this selection to open the Macro Manager dialog. Use the Macro Manager along with the Macro Recorder on a screen to create and maintain macros.

Select Custom Keyboard Layout

From this list, select a previously configured (see **Custom Keyboards**, below) keyboard layout to be assigned to this screen.

Custom Keyboards

Click this button to open the Custom Keyboard Layouts window and configure a keyboard layout that may be assigned to one or more screens.

Application Scheme

Click this button to change the appearance of eXpress application (see Application Color Scheme Preferences). Note: This will not affect the screen appearance. The screen appearance can be altered by clicking the **Custom Appearance** button on the **Appearance and Keyboard** tab (see, above).

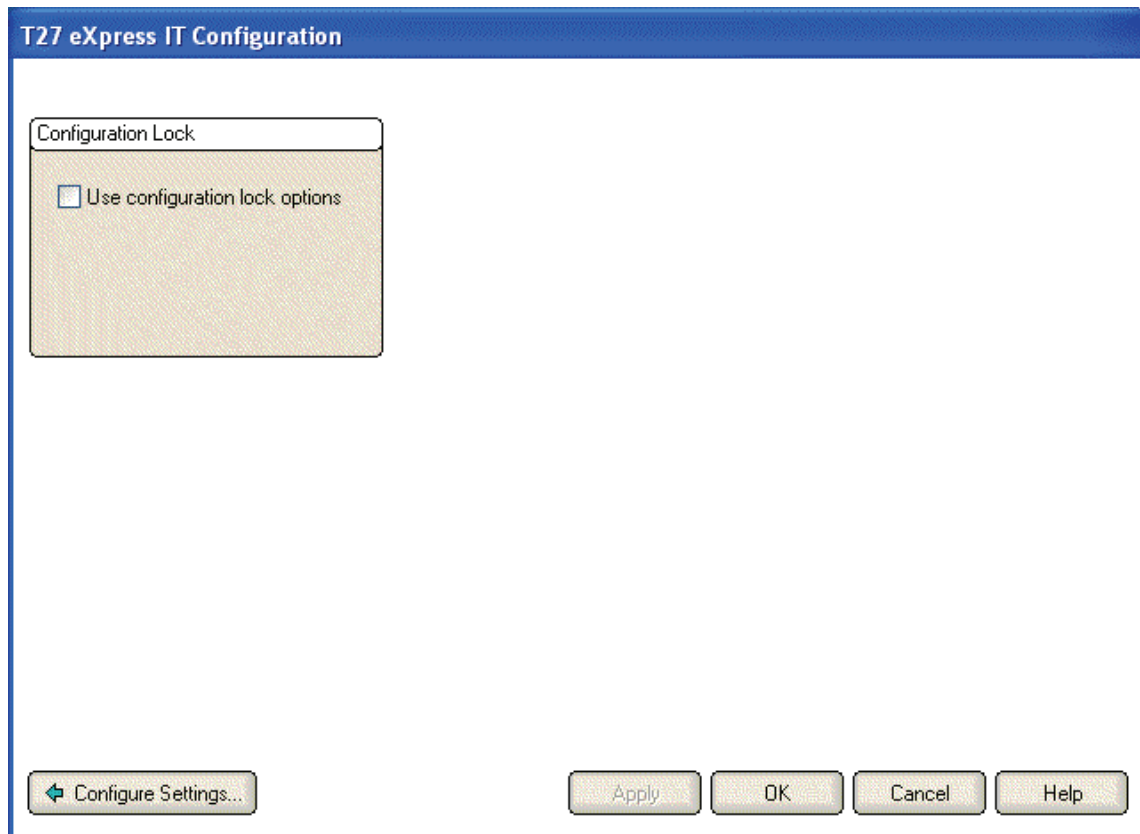
Restriction Settings/Configure Settings

Click this button to toggle to and from the restriction settings dialog.

Restriction Settings dialog

The restriction settings dialog on the **T27 eXpress IT Configuration** window contains configuration controls that may be used to enforce configuration security by assigning a configuration password.

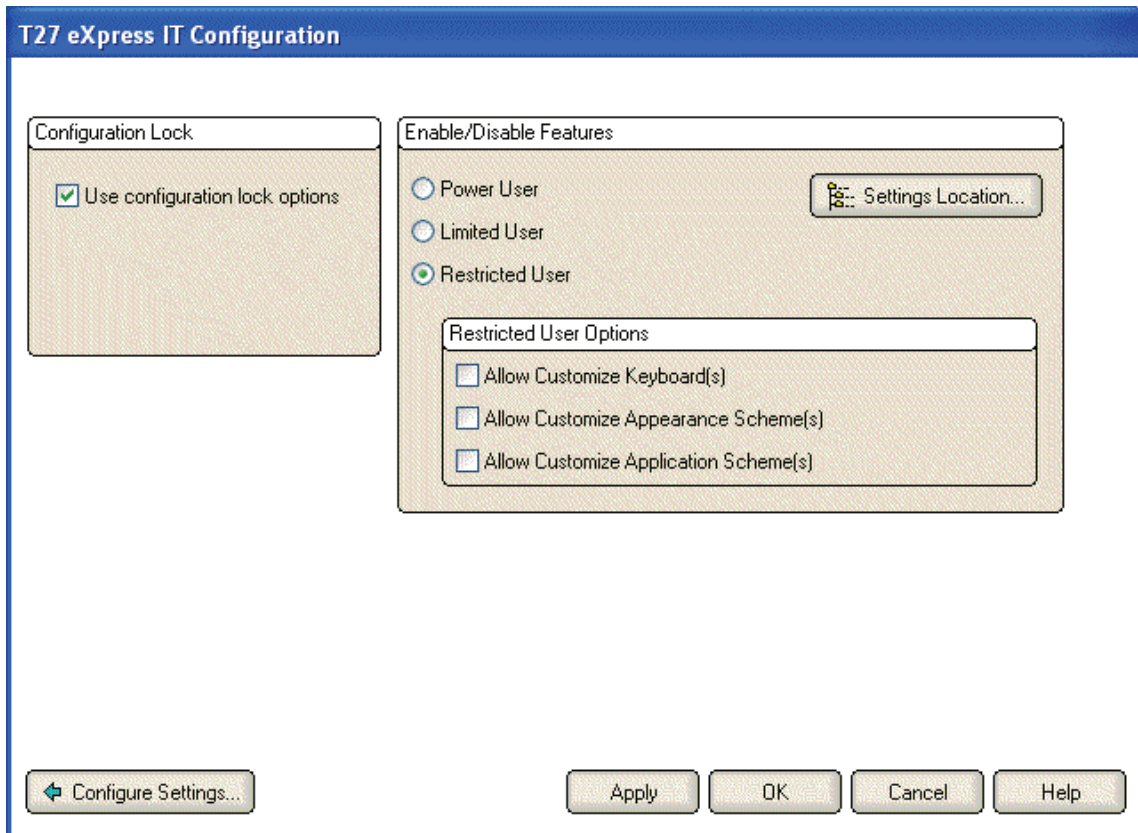
Once the password is assigned, all or selected configuration options may be disabled by checking the appropriate option. Subsequently, to enable an option, you must first unlock the configuration by providing the assigned password.



Use Configuration Lock Options

Check this box to initiate password protection on configuration options. Checking this box will cause the **Lock Config. Initial Password** dialog to be displayed. After entering and confirming the new password, additional security features will become visible (see below).

Note: For the configuration lock to take effect, both the configuration and the emulator must be exited and restarted.



With this level of eXpress, users may be restricted to one of three levels: the Power User, the Limited User and the Restricted User.

A Power User may configure all options including connections to the host, thus a Power User has no configuration restrictions.

A Limited User is only limited to configuring non-communications options.

A Restricted User may be denied any configuration capabilities or limited to only those involving application/screen appearance and keyboards.

eXpress User Capabilities at a Glance

User Level	Allowed Capabilities					
	Configure Connections	Terminal Settings	Macro Development	Screen Appearance	Customize Keyboards	Application Scheme
Power User	Yes	Yes	Yes	Yes	Yes	Yes
Limited User	No	Yes	Yes	Yes	Yes	Yes
Restricted User	No	No	No	Optional	Optional	Optional

Settings Location

The purpose of this feature is to allow all users of a single machine (Windows system) to use the same configuration settings for the T27 eXpress Plus terminal emulator and/or the eXpress Connect host connections. By default, all emulator settings are saved in files for the current user (C:\Documents and Settings\<<USER>>\Application Data\KMSystems\T27_EXPRESS_PLUS32_4.0\CONFIGURATION) which allows multiple users on the same machine to have their own individual settings.

In some cases, it may be desirable to have one set of configuration settings used by all users of the machine. One reason for common settings is so that the configuration settings can be done once for all users, instead of for each individual user; however, users should **NOT** be allowed to make configuration changes once they are set. There should only be one allowed to maintain the configuration. If common configuration settings are desired, the emulator settings will be stored in common files

(C:\Documents and Settings\All Users\Application Data\KMSystems\T27_EXPRESS_PLUS32_4.0\CONFIGURATION) and removed from current user.

The mechanism for creating common configuration settings in the T27 eXpress Plus terminal emulator is accessed from this dialog of the **T27 eXpress Plus Configuration** window. The eXpress Connect transport settings are accessed from the **Edit** menu in the **eXpress Connect Visual Configuration** window. Both the emulator and eXpress Connect transport settings are made common or by users, independent of one another. For example, eXpress Connect transport settings may be made common, while emulator settings remain by user.

The **Settings Location** feature is only available when **Use configuration lock options** is checked. Again, individual users should **NOT** be allowed to changes settings when the configuration settings are common to all users of the same machine.

Restricted User Options

The following options are only available when configuring restricted users. Power users and limited user have these capabilities by default.

Allow Customized Keyboard(s)

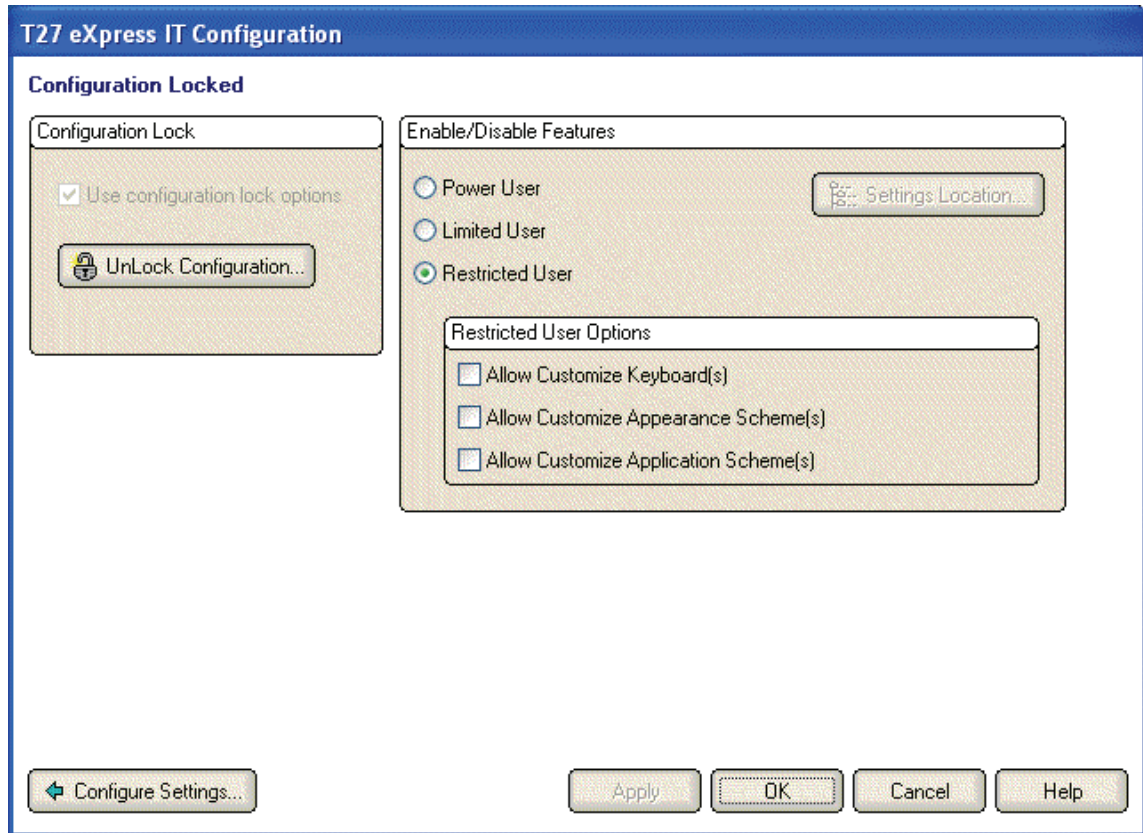
Check this box to allow the restricted use to develop and use personalized keyboards.

Allow Customized Appearance Scheme(s)

Check this box to allow the restricted user to develop and assign appearance schemes to screens.

Allow Customize Application Scheme(s)

Check this box to allow the restricted user to develop and maintain appearance schemes for the eXpress Plus application.



Unlock Configuration

This button may be used to display the **Unlock Config Password** dialog where the proper password may be entered to enable the controls on the restrictions dialog. This button is only visible if the **Use Configuration Lock Options** check box has been set and a password entered.

Apply

Click this button to apply the settings immediately without exiting the configuration window. If you have entered the configuration window from the emulator, you will see any changes take effect in the emulator immediately.

OK

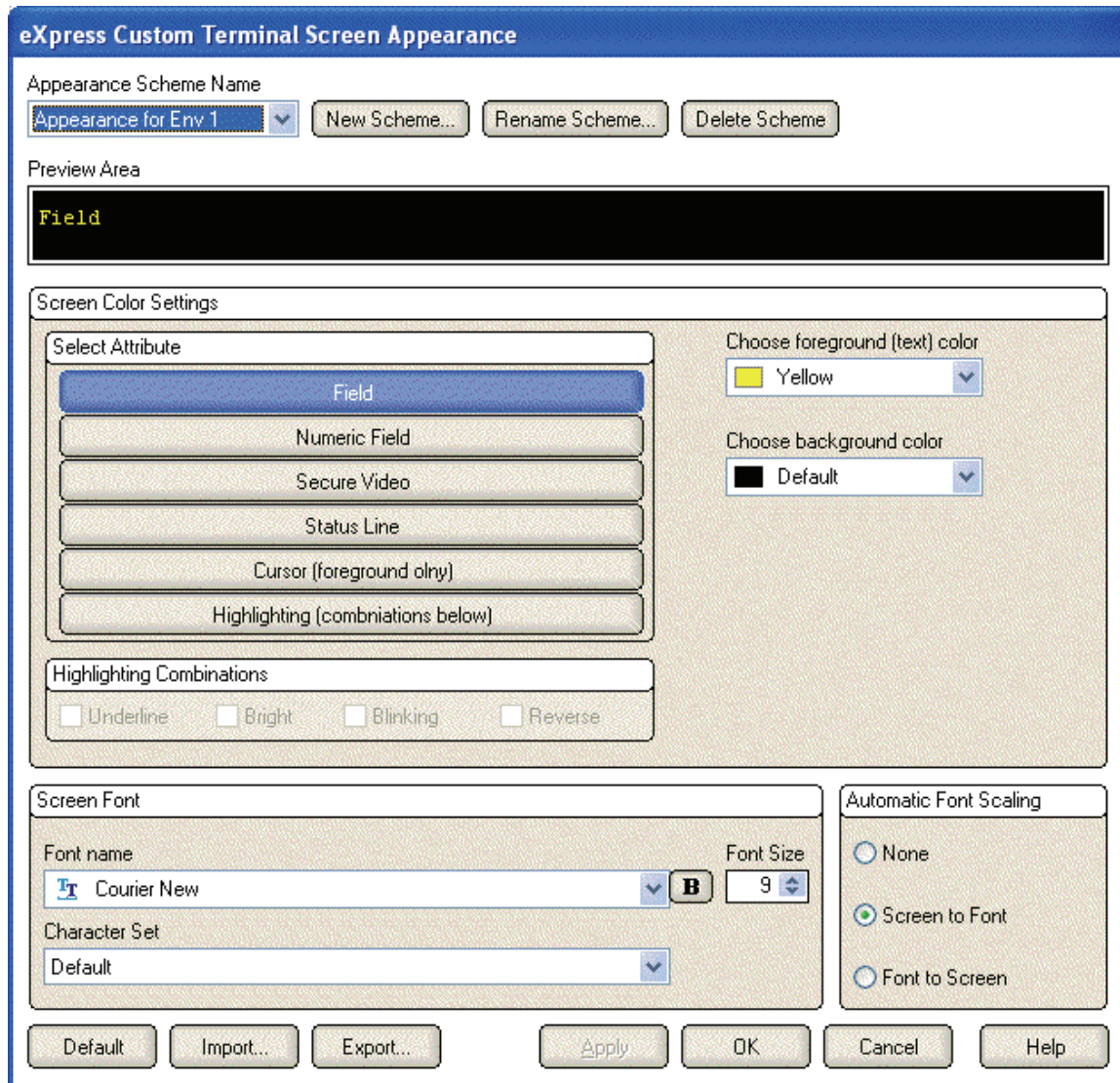
Click this button to accept any changes made in this window and close the window.

Cancel

Click this button to discard any changes made and close the window.

eXpress Custom Terminal Screen Appearance

The **eXpress Custom Terminal Screen Appearance window** contains configuration controls to change screen fonts and to apply colors to specific areas of the display.



Appearance Scheme Name

From this drop-down list box, select the **Color Scheme Name** to be altered. Initially, one color scheme, **Default**, is delivered with T27 eXpress IT. From the **Default** color scheme, others may be created using the **Save As** button.

New Scheme

Use this button to create a new appearance scheme based on the UTS eXpress IT defaults. By this means, each screen can have its own appearance scheme or screens may share an appearance scheme. To attach an appearance scheme to a screen, see T27 eXpress IT Configuration.

Note: The scheme named "Default" may be changed but cannot be deleted. When a new scheme is created or an existing scheme **Set to Default** (see below), the default values are acquired from constants internal to T27 eXpress IT, not from the "Default" scheme mentioned here.

Rename Scheme

Click this button to rename an existing appearance scheme.

Delete Scheme

Click this button to remove the selected appearance scheme. Caution: Any screen attached to the deleted scheme will revert to the T27 eXpress IT default scheme.

Screen Color Settings

The **Screen Color Settings** group contains controls that may be used to change the foreground and background color of various T27 screen attributes.

Select Attribute

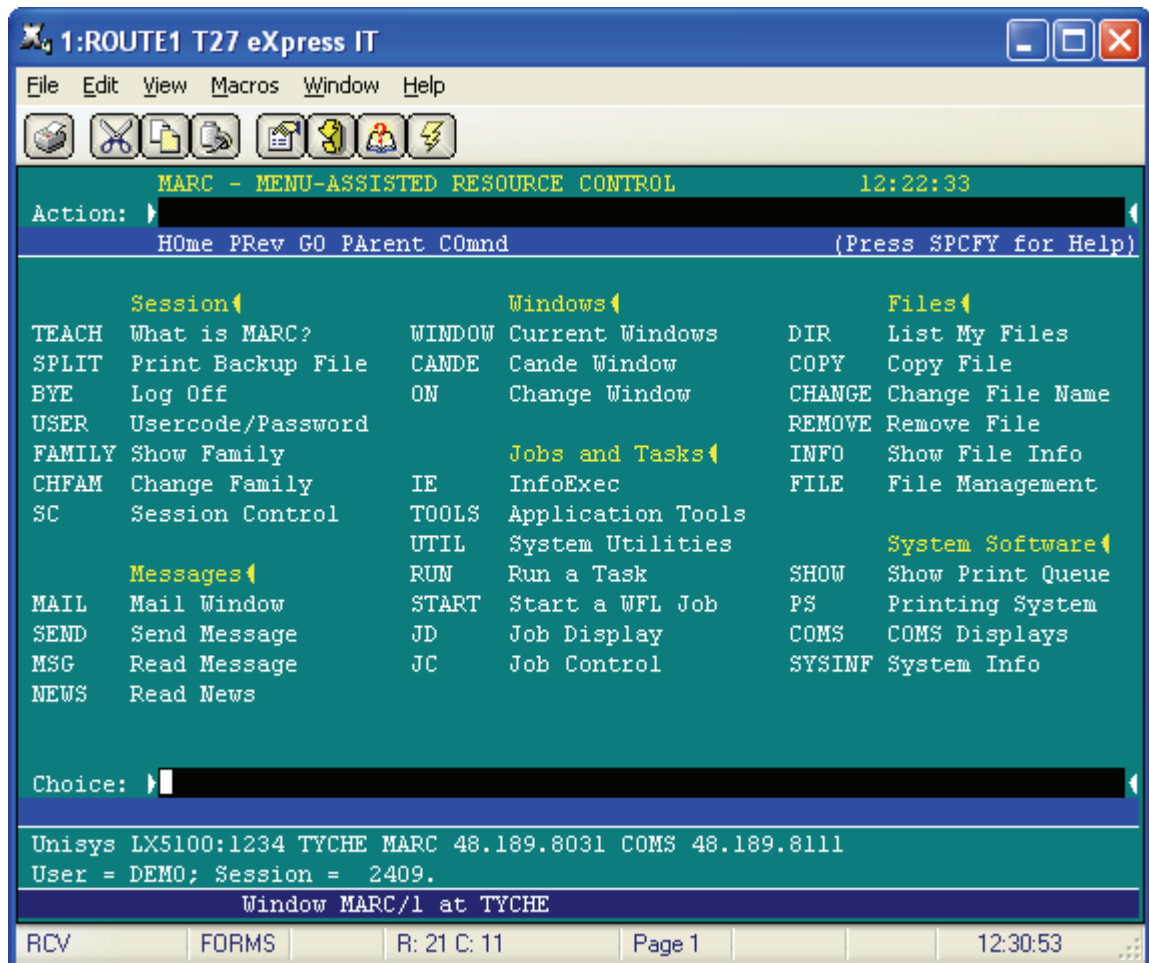
From this group, select an attribute option button whose color is to be changed. When an attribute's colors are changed, those colors will be applied to all areas of the screen having that specific attribute. An attribute's colors consist of a foreground (text) color and a background color.

Note: The **Highlighting** button, used in conjunction with the **Highlighting Combinations** options, offers a possibility of 16 color pairs (foreground/background) when selecting colors for highlighting attributes (Underline, Bright, Blinking and Reverse Video), a combination of those attributes or no attributes.

Highlighting Combinations

This group of checkboxes becomes visible only when the **Highlighting** button is selected. Each checkbox represents a highlighting attribute. After selecting an attribute, combination of attributes or no attribute, use the **Choose Foreground (text) Color** and **Choose Background Color** controls to set the colors for that selection.

On the following screen, there are three examples of highlighting: Highlighting-None (white on teal), Highlighting-Underline (white on blue) and Highlighting-Bright (yellow on teal).



Configuration for Highlighting-Bright:

Choose Foreground (text) Color

To change the text color of an attribute, first select the attribute from the **Select Color for Attribute** option group. Next, select a color from this drop-down list box. If you do not wish to use one of the standard Windows colors, select **Custom** at the bottom of the list and configure the desired color with the standard Windows **Color** dialog.

Choose Background Color

To change the background color of an attribute, first select the attribute from the **Select Color for Attribute** option group. Next, select a color from this drop-down list box. If you do not wish to use one of the standard Windows colors, select **Custom** at the bottom of the list and configure the desired color with the standard Windows **Color** dialog.

Screen Font

Use the controls in this group to change the screen font, intensity, size and character set.

Font Name

From this drop-down list box, choose the desired font.

Bold

Click this button toggle to increase or decrease the intensity of the selected font.

Font Size

Use this spin box to increase or decrease the size of the selected font.

Character Set

Use this drop-down list box to change the character set.

Automatic Font Scaling

These three options control how the emulator will behave when you size a station window or change the screen font.

None

When the **None** option is set, no screen or font scaling will be performed when the screen window is resized.

Screen to Font

The **Screen to Font** option causes the screen window size to be changed automatically when the screen font size is changed. Consequently, the station window size may be changed without altering the size of the font. If the size of the window is made larger than that necessary to accommodate the screen size, a blank area will show the physical limits of the screen. If the window size is reduced below the physical screen size, scroll bars appear allowing access to those parts of the screen not currently visible.

Font to Screen

The **Font to Screen** option causes the font size to change automatically whenever the window size of the station is altered. For example: If a window is enlarged or made smaller, the font will increase or decrease in size, accordingly. The **Font to Screen** option will only work when using a scalable font (e.g., Courier New, Lucida Sans Typewriter, etc.). To select a scalable font, click on the **Screen Font** button.

Default

Use this button to change the selected color scheme to the T27 eXpress IT defaults.

Import

Click this button to import an existing appearance settings file.

Export

Click this button to export the appearance settings to a file.

Apply

Apply the settings immediately without exiting the configuration window. If you have entered the configuration window from the emulator, you will see any changes take effect in the emulator immediately.

OK

Click this button to accept any changes made in this window and close the window.

Cancel

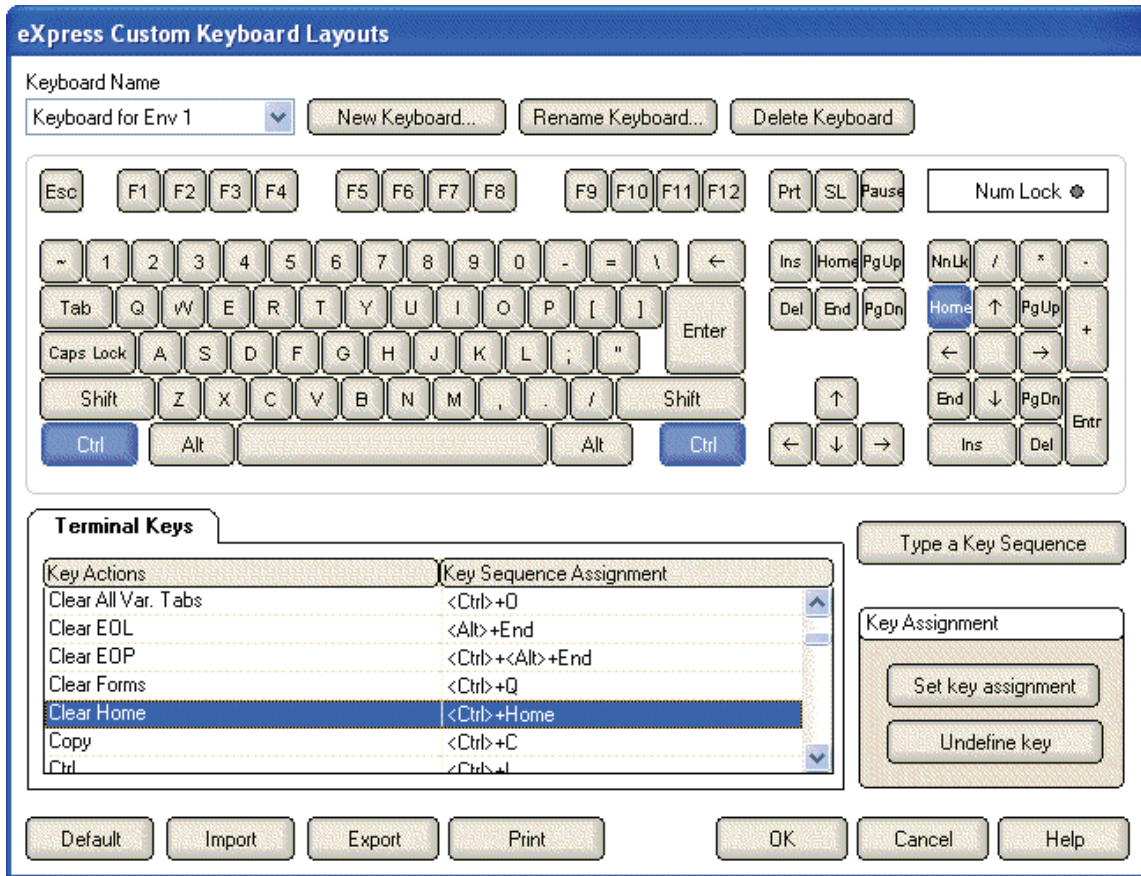
Click this button to discard any changes made and close the window.

Help

Receive on help for this window.

eXpress Custom Keyboard Layout

This window is used to define which Windows keyboard key, or key combination, will be used to initiate a T27 terminal or T27 eXpress IT emulation specific action. Use this window to customize the keyboard to meet your specific needs.



New Keyboard

Click this button to name a new keyboard layout.

Rename Keyboard

Click this button to rename an existing keyboard layout.

Delete Keyboard

Click this button to delete the selected keyboard layout.

Graphic Keyboard

The graphic keyboard display illustrates the configured key or key combinations associated with a terminal key. Note: The location and arrangement of the keys on the graphic keyboard may not match the exact layout of your keyboard; however, most keys on your keyboard should have its corresponding key represented on the graphic keyboard. After selecting a key name from the **Key Actions and Key Sequence Assignment** list, the configured key or key combinations will appear as if they have been pressed. You may change (redefine) or add additional key combinations by pressing the key(s) on the graphic keyboard with a left mouse click. Valid key combinations are any single key, or a single key plus a combination of one or more of the optional, **Shift**, **Alt** and **Ctrl** keys. When the desired key combinations have been selected, press the **Set Key Assignment** button to assign the key.

Note: Pressing the **Num Lock** key on the *actual* keyboard will cause the **Num Lock** display on the graphic keyboard to toggle (ON/OFF) and the captions on the faces of the numeric keypad keys to change accordingly.

The extended keys (see below) are not mapped to any key in the **Key Actions** list for the default keyboard layout file. They may, however, be mapped by the user to any key or script in the **Key**

Actions list. If they are **not** mapped, their behavior will be the same as their counterparts on the numeric keypad and main keyboard.

For enhanced 101- and 102-key keyboards, extended keys are the **Ins, Del, Home, End, Page Up, Page Down** and arrow keys in the clusters to the left of the numeric keypad; and the divide (*/*) and **Enter** keys in the numeric keypad. The location and arrangement of extended keys may vary from one keyboard to another and may not match the graphic keyboard display.

Key Actions

This list box contains the names of all keys used to control T27 terminal activities or activities specific to T27 eXpress IT terminal emulation. These keys can be mapped to keys pressed on the graphic keyboard or via the **Type a Key Sequence** button.

Type a Key Sequence

If this button is clicked, a **Type a Key Sequence** window will pop up. In this window, you may type the key sequence you desire to map to the currently selected name in the **Key Actions** list. On your acceptance of the typed key sequence, the key will automatically be mapped.

Set Key Assignment

This button sets the mapping of the currently selected **Key Action** to the selected graphic keyboard keys.

Undefine Key

This button is used to remove the mapping of a key. You may remove a mapped key by first selecting the key in the **Key Actions** list followed by a click of this button.

Default

This button loads the default keyboard layout as distributed by KMSYS Worldwide, Inc.

Import

Use this button to import an existing keyboard definition file (.KEY).

Export

Use this button to save the current keyboard layout to a file.

Print

Click this button to print a list of all key actions and key action assignments. Note: The list will include any key sequences assigned to scripts.

OK

Clicking the **OK** button saves all changes made in this window and closes the window.

Cancel

Clicking the **Cancel** button closes this window and discards all changes made since it was last opened.

Help

Receive on help for this window.

How to Map or Re-Map a T27 Terminal or a T27 eXpress IT Key

The following describes the procedure for re-mapping T27 terminal or T27 eXpress IT keys:

- 1) Select the key to be re-mapped from the **Key Actions** list box.
- 2) There are two methods of defining which key or key combination to map to the selected name in the Terminal Keyboard Key Names list:
 - a) Click the **Type Key Sequence** button, then type the desired key sequence directly on your keyboard. When you accept the key sequence, the key mapping will automatically be set.

- b) Select the desired key from the graphic keyboard using a left mouse click over the face of the key. Next, select the desired **Shift**, **Alt** and **Ctrl** keys, if any, by clicking them with the mouse. Finally, to set the keys selected, click the **Set Key Assignment** button.

These steps may be repeated until all desired key mappings are completed.

Conflicts

If a selected key sequence is already mapped to another key, a message box will appear naming the mapped **Key Actions**. You may then re-map or "undefine" the **Key Actions** in conflict or choose a different key sequence.

If you map a **Key Actions** that already has a key sequence assigned to it, a window will appear allowing you to **Add** an alternate key sequence, **Redefine** (replace) the existing key sequence with the new key sequence or **Cancel** the key assignment operation altogether.

Add or Redefine Key

The **Add or Redefine Key** window appears when a conflict is discovered while attempting to assign a keystroke or keystroke combination to a keyboard function.

Help

Click this button to receive on help for this window.

Add

Click this button to add an alternate key sequence. This choice is useful when you want more than one keyboard key to perform the same function (e.g., the two **Enter** keys).

Redefine

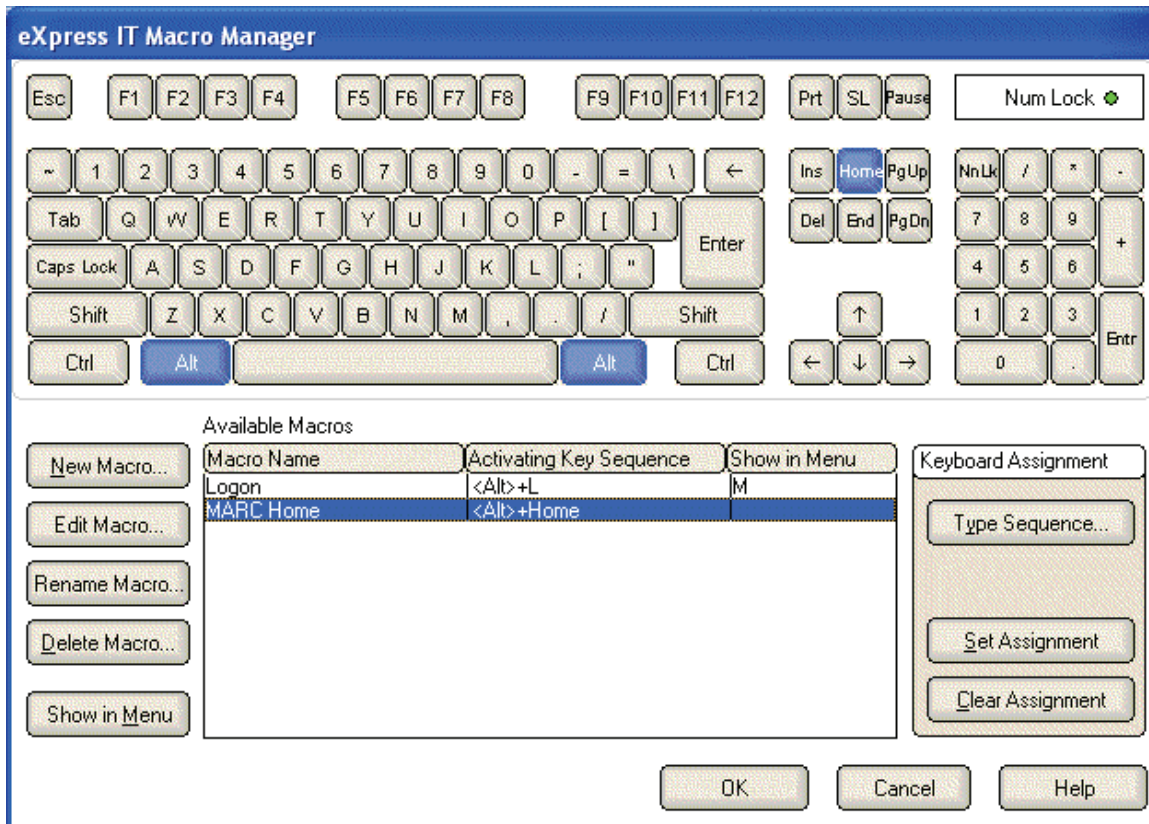
Redefine or replace the existing key sequence.

Cancel

Clicking the **Cancel** button closes this window without assigning the key.

eXpress IT Macro Manager

This tab is used to maintain key macros. Key macros may consist of any T27 key function, standard Windows cut/copy/paste, text strings, text strings with user prompts, timed waits and conditional waits for strings. Macros may be created initially within the macro editor or through the use of the macro recorder from any open screen.



Graphic Keyboard

The graphic keyboard display illustrates the configured key or key combinations assigned to activate a macro. Note: The location and arrangement of the keys on the graphic keyboard may not match the exact layout of your keyboard; however, most keys on your keyboard should have its corresponding key represented on the graphic keyboard. After selecting a macro name from the **Available Macros** list, the configured key or key combinations will appear as if they have been pressed (light gray). You may change (redefine) or add additional key combinations by pressing the key(s) on the graphic keyboard with a left mouse click. Valid key combinations are any single key plus one or more of the optional, **Shift**, **Alt** and **Ctrl** keys. When the desired key combinations have been selected, press the **Set Assignment** button to assign the key.

Note: Pressing the **Num Lock** key on the *actual* keyboard will cause the **Num Lock** display on the graphic keyboard to toggle (ON/OFF) and the captions on the faces of the numeric keypad keys to change accordingly.

For enhanced 101- and 102-key keyboards, extended keys are the **Ins**, **Del**, **Home**, **End**, **Page Up**, **Page Down** and arrow keys in the clusters to the left of the numeric keypad; and the divide (/) and **Enter** keys in the numeric keypad. The location and arrangement of extended keys may vary from one keyboard to another and may not match the graphic keyboard display.

The extended keys may be mapped to any macro in the **Available Macros** list. If they are *not* mapped, their behavior will be the same as their counterparts on the numeric keypad and main keyboard.

Available Macros

This list box contains the names of all configured key macros. Each macro can have an activation key(s) assigned by pressing the keys on the graphic keyboard, followed by the **Set Assignment** button, or via the **Type Sequence** button.

New Macro

Click this button to create a new macro. Hint: You can easily create a new macro by using the macro recorder on the T27 eXpress IT emulator window. See the **Start Recorder** selection on the **Macros** menu.

Edit Macro

After selecting a macro from the **Available Macros** list, click this button to edit or view the macro with the **Edit Macro** dialog.

Delete Macro

After selecting a macro from the **Available Macros** list, click this button to delete the macro.

Show in Menu

Use this button to toggle between placing the selected macro on the **Macros** menu and removing it from view.

Type Sequence

If this button is clicked, a **Type a Key Sequence** window will pop up. In this window, you may type the key sequence you desire to map to the currently selected name in the **Available Macros** list. On your acceptance of the typed key sequence, the key will automatically be mapped.

Set Assignment

This button sets the mapping of the currently selected **Available Macros** to the selected graphic keyboard keys.

Clear Assignment

This button is used to remove a key mapping. You may remove a mapped key by first selecting the key in the **Available Macros** list followed by a click of this button.

How to Assign a Macro Activation Key

The following describes the procedure for assigning macro activation keys:

- 1) Select the key to be remapped from the **Available Macros** list box.
- 2) There are two methods of defining which key or key combination to map to the selected name in the **Available Macros** list:
 - a) Click the **Type Sequence** button, then type the desired key sequence directly on your keyboard. When you accept the key sequence, the key mapping will automatically be set.
 - b) Select the desired key from the graphic keyboard using a left mouse click over the face of the key. Next, select the desired **Shift**, **Alt** and **Ctrl** keys, if any, by clicking them with the mouse. Finally, to set the keys selected, click the **Set Assignment** button.

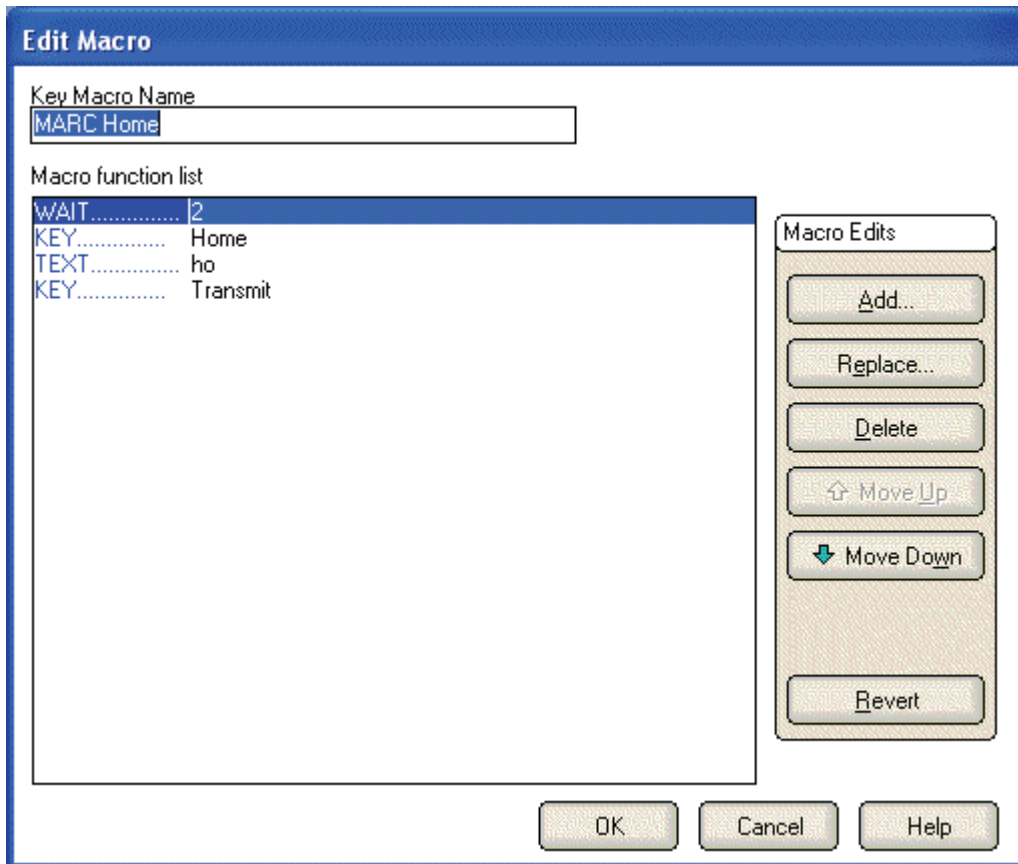
These steps may be repeated until all desired activation keys have been assigned.

Conflicts

If a selected key sequence is already mapped to another key (macro activation key or terminal function), a message box will appear naming the mapped macro or terminal function. You may then re-map or remove the **Available Macros** in conflict or choose a different key sequence.

Edit Macro

The **Edit Macro** window is used to create and edit a string of successive keystrokes, waits and conditions that can comprise a macro.



Key Macro Name

In this text box, enter the name of the macro as it will appear on the **Macros** menu or macro bar.

Macro Function List

This list box contains a serial list of keystrokes, timed waits, prompts and wait conditions that can be included in a key macro. Select from this list when replacing, deleting or moving a function in the list.

Add

Click this button to reveal a drop-down menu containing six different types of functions that may be included in the macro.

Terminal Key Function

Make this selection to bring up the Select Terminal Key Function window where a single T27 or T27 eXpress IT terminal keystroke (e.g., SOE, XMIT, CLIPBOARD_COPY, etc.) may be selected.

Text String

Make this selection to initiate the Text String dialog used to enter a string of text in the macro.

Text String Prompt

Use this selection to place a user prompt dialog in the macro. The selection displays the Edit Prompt for Text window where a user prompt string may be entered. When the macro is run, the dialog will be displayed with the user prompt, querying the user to enter a text string.

Cursor Position

Use this selection to place the cursor at a particular row and column. This selection displays the Position Cursor dialog where the row and column may be entered.

Timed Wait

Make this selection to specify that the macro should wait for a period. The selection displays the Timed Wait window where the pause time is specified in seconds.

Wait for String

Select this item to insert a conditional wait in the macro. The ensuing Wait for String dialog allows you to specify a search string, the location of the search string on the screen, an equal or not equal operator and a timed wait value.

Replace

After selecting a function from the **Macro Function List** box, click this button to replace the function with a different function, or edit the selected function. This button drops down the same selection menu as described for the **Add** button (see above).

Delete

After selecting a function from the **Macro Function List** box, click this button to delete the function from the macro.

Move Up

Press this button to move the selected function up in the macro.

Move Down

Press this button to move the selected function down in the macro.

Revert

Clicking this button will revert any changes to the macro since the dialog was opened..

OK

Click this button to accept the changes to the macro and close the window.

Cancel

Click this button to discard any changes and close the window.

Edit Prompt for Text

This window allows a user prompt to be entered and placed in the macro.

Enter User Prompt

In this text box, enter the prompt to be displayed when the user is asked to enter a text string.

Password Entry

Check this box to password protect the text entered by the user. Password protection causes asterisks (*) to be displayed in the text box as the user enters the text string.

OK

Click this button to accept the entries and close the window.

Cancel

Click this button to discard the entries and close the window.

Position Cursor

This window allows you to position the cursor to a location on the screen.

Column

In this text box, enter the column to place the cursor.

Row

In this text box, enter the row to place the cursor.

OK

Click this button to accept the entries and close the window.

Cancel

Click this button to discard the entries and close the window.

Select Terminal Key Function

This window allows the entry of single T27 terminal key or T27 eXpress IT key functions into the script.

Type List Search String

In this text box, enter a partial or full terminal key function name. Type only enough of the name to highlight the desired key function in the key function list box below this list box.

OK

Click this button to select the highlighted key function.

Cancel

Click this button to cancel the selection process.

Text String

This window allows the macro developer to enter a string of text in the macro.

Enter a Text String

In this text box enter the text string. The string of text will be inserted at the current cursor position on the screen.

OK

Click this button to accept the text entry and close the window.

Cancel

Click this button to discard the entry and close the window.

Timed Wait

This window allows the entry of a pause in the execution of the macro. The timed wait is useful when communications is slow and a large amount of processing from the host occurs before returning control to the terminal screen.

Enter Wait Time in Seconds

In this text box, enter the number of seconds the macro is to wait before resuming processing of the next macro function.

OK

Click this button to accept the entry and close the window.

Cancel

Click this button to discard the entry and close the window.

Wait for String

This window allows a conditional wait to be placed in the macro. The macro will wait for the presence or absence of a string returned from the host.

String Value

In this text box, enter the string to look for on the screen. The value entered is case insensitive.

String Location

This group allows the location on the screen of the anticipated text string.

When choosing the location on the screen to test for a string, you should be aware of the sequence of events that occurs, before the macro gets control to do the testing. For example, in DEMAND mode, most output received from the host is painted on the next to last line of the terminal display. Before control is returned to the macro, a CURSOR TO HOME and DELETE LINE is issued, thus moving the output to two lines from the bottom of the display. Thus, on a 24-line display, testing should be performed on row 22, not row 23.

Row

In this text box, specify the row where the beginning of the string is expected.

Relative to Current Row

If this box is checked, the value entered in the **Row** text box is relative to the current row of the cursor.

Column

In this text box, specify the column where the beginning of the string is expected.

Relative to Current Column

If this box is checked, the value entered in the **Column** text box is relative to the current column of the cursor.

Any position in Entire Screen

Check this box to look for the string beginning at any position on the screen.

Wait for String To Be

This option group is used to specify if the condition checked for is true or false.

Equal =

Select this option to check for an equal condition.

Not Equal <>

Select this option to check for a not equal condition.

Wait Time (seconds)

In this text box, enter the number of seconds to wait before failing the test. In other words, this is the interval of time to wait for the presence (=) or absence (<>) of the anticipated string. When this time is exceeded, a time-out message box will appear during macro execution.

OK

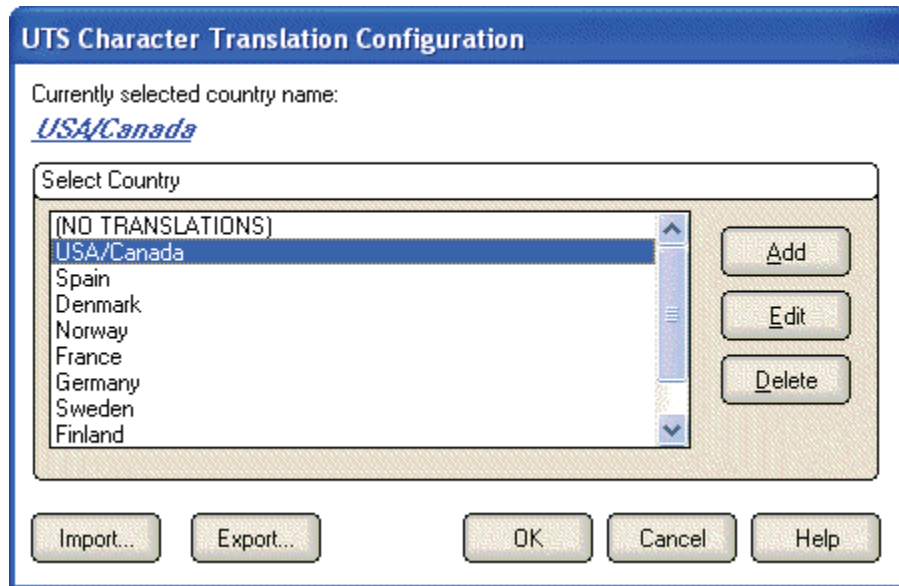
Click this button to accept the entries and close the window.

Cancel

Click this button to discard the entries and close the window.

T27 Character Translation Configuration

The **T27 Character Translation Configuration** window provides the ability to select and edit character translation sets for specific countries.



Select the translation set (the default is NO TRANSLATION) for your locality.

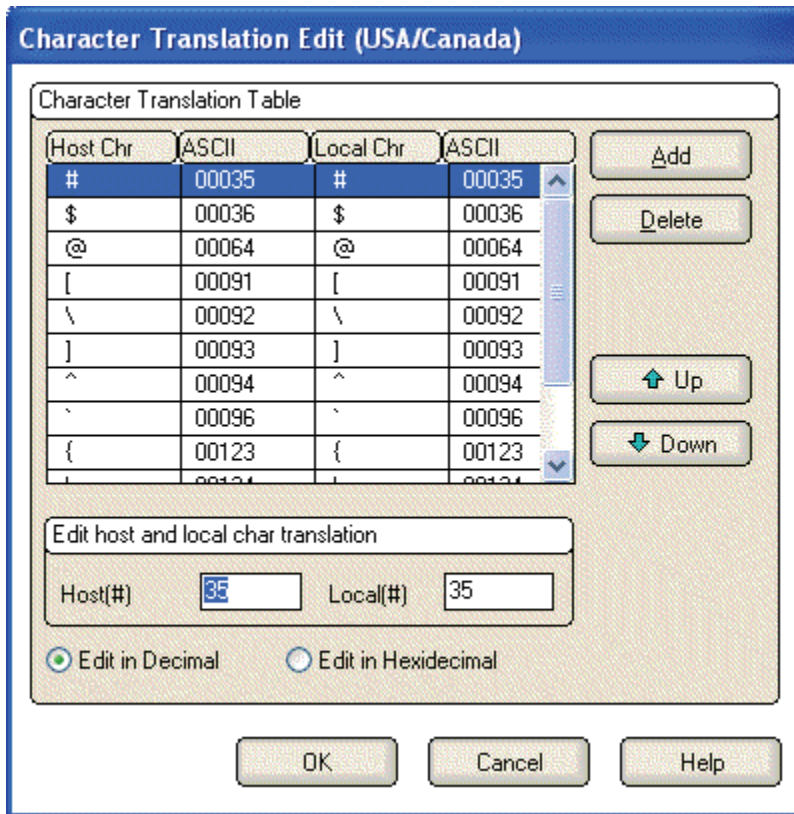
To add a translation set, click the **Add** button. A second window will appear where you may enter a country name that will correspond to the translation set.

To change one or more characters in a translation set, highlight a country name using the left mouse button or the up/down arrow keys and click the **Edit** button.

To delete a translation set, highlight a country name using the left mouse button or the up/down arrow keys and click the **Delete** button.

Character Translation Edit

This window allows you to specify host character and local character pairs for translation on all data received from, or sent to, the host during a **T27 eXpress IT session**. All characters are specified in ASCII numeric notation.



Select an existing character in the translation table using the scroll bar, mouse and/or up/down arrow keys. Type any changes into the two text boxes (Host and Local) at the bottom of the window.

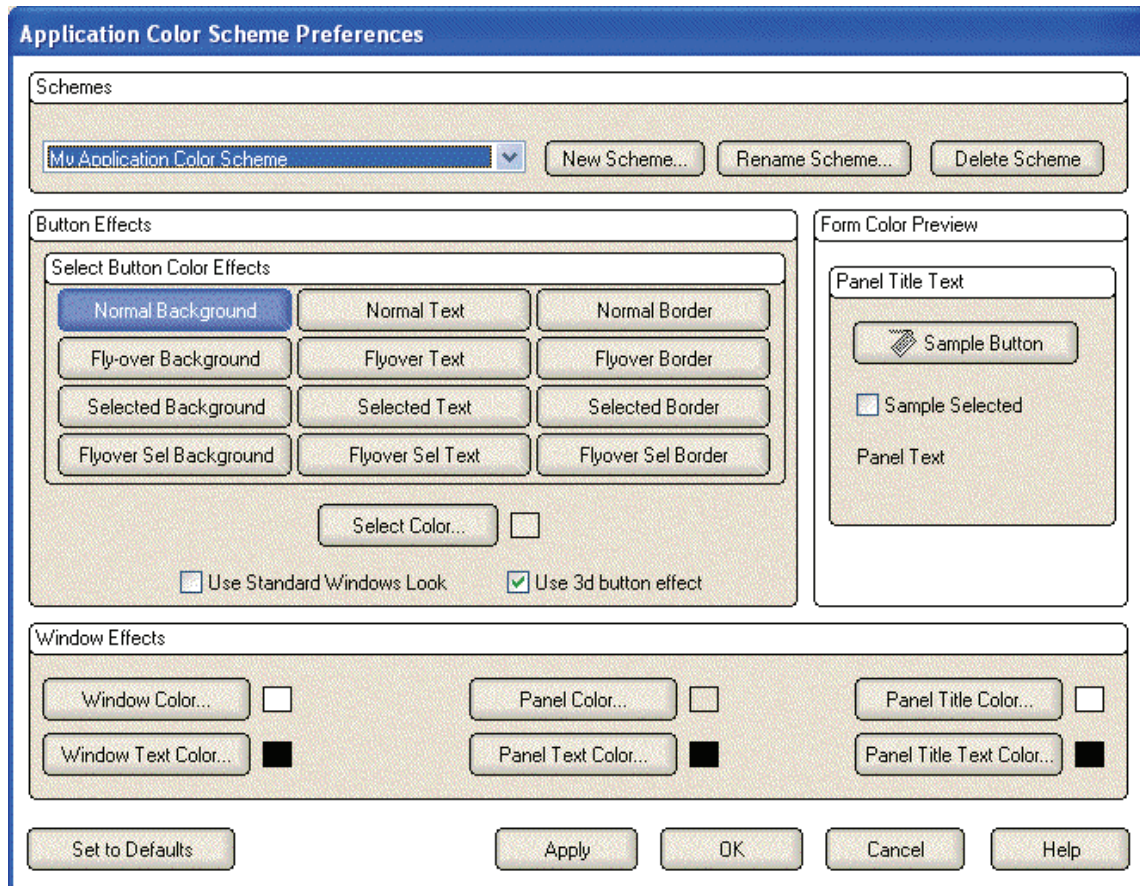
To add a new character, select each of the two text boxes (Host and Local) at the bottom of the window, enter the new values and click the **Add** button.

To delete an existing character, select a character in the translation table using the scroll bar, mouse and/or up/down arrow keys and click the Delete button.

Application Color Scheme Preferences

The **Application Color Scheme Preferences** window contains controls that affect the appearance of the eXpress application.

Selection on this window does not affect the appearance of the screen portion of an opened session. Unlike color selections set for emulation screens, application colors will be affected by any changes that have been made to the Windows System Colors.



Schemes

From the drop-down list box, select from one of the pre-configured schemes from KMSYS Worldwide or from a scheme created by you. The pre-configured schemes marked as, "(Preset)", may not be altered but may be selected and become the basis of a new scheme created by you (see the **New Scheme** button).

New Scheme

Click this button to create (name) a new application scheme. Note: Whatever scheme is selected from the drop-down list box will be the basis of the new scheme.

Rename Scheme

Click this button to rename a selected scheme. "(Preset)" schemes may not be renamed.

Delete Scheme

Click this button to delete a selected scheme. "(Preset)" schemes may not be deleted.

Button Effects

The controls in this group determine the appearance of buttons on the eXpress application.

Select Button Color Effects

Use the buttons in this group in conjunction with the **Select Color** button to change the colors of buttons and the colors displayed on mouse flyover.

Normal Background

Click this button followed by the **Select Color** button to change the background color of non-selected buttons.

Normal Text

Click this button followed by the **Select Color** button to change the color of text on non-selected buttons.

Normal Border

Click this button followed by the **Select Color** button to change the color of the border surrounding non-selected buttons.

Flyover Background

Click this button followed by the **Select Color** button to change the background color of buttons when the mouse cursor is moved over the button.

Flyover Text

Click this button followed by the **Select Color** button to change the text color that will appear when the mouse cursor is moved over a button.

Flyover Border

Click this button followed by the **Select Color** button to change the border color that will appear when the mouse cursor is moved over a button.

Selected Background

Click this button followed by the **Select Color** button to change background color of a selected button.

Selected Text

Click this button followed by the **Select Color** button to change the text color of a selected button.

Selected Border

Click this button followed by the **Select Color** button to change the border color of a selected button.

Flyover Sel Background

Click this button followed by the **Select Color** button to change the background color of a selected button when the mouse cursor is moved over the button.

Flyover Sel Text

Click this button followed by the **Select Color** button to change the text color of a selected button when the mouse cursor is moved over the button

Flyover Sel Border

Click this button followed by the **Select Color** button to change the border color of a selected button when the mouse cursor is moved over the button

Select Color

Use this button to change color after selecting a button effect from the **Select Button Color Effects** button group.

Use Standard Windows Look

Standard look will make buttons and panel look like the standard windows controls. If XP themes are in uses, buttons will have themes applied.

Note: When this box is checked, changes made using other color controls on this dialog will not be evident in the eXpress application; i.e., checking this box overrides all other color selections for the application. Screen color selections are unaffected by this option.

Use 3d Button Effect

If this box is checked, all buttons will have a three-dimensional appearance. If the box is not checked, buttons will have a flat appearance.

Form Color Preview

All controls in this group are for preview purposes only.

Panel Title Text

The background and text in this title are affected by selections made with the **Panel Title Color** and **Panel Title Text Color** buttons in the **Window Effects** group at the bottom of this dialog.

Sample Button

The appearance of this button can be altered by any of the controls in the **Button Effects** group to the left of this preview panel.

Sample Selected

When this box is checked, the **Sample Button** will appear as determined by the bottom six buttons in the **Select Button Color Effects**; unchecked, the top six determine the effect.

Panel Text

Panel text and panel background are set using the **Panel Text Color** and **Panel Color** buttons, respectively.

Window Effects

The six buttons in this group let you set the color scheme for the windows, panels and text displayed in the eXpress application. For button colors, see above.

Window Color

This button determines the background color of the eXpress windows.

Window Text Color

This button determines the color of any text appearing on an eXpress window. It does not affect panel or button text.

Panel Color

Use this button to alter the background color of a panel.

Panel Text Color

Use this button to change any text found on a panel.

Panel Title Color

This button may be used to alter the background color of panel titles.

Panel Title Text Color

Use this button to alter the text color of panel titles.

Set to Defaults

This button may be used to reset button and window color defaults according to the way they are defined in Windows.

Apply

Use this button to apply any changes immediately without exiting this window.

OK

Use this button to accept changes and exit the window.

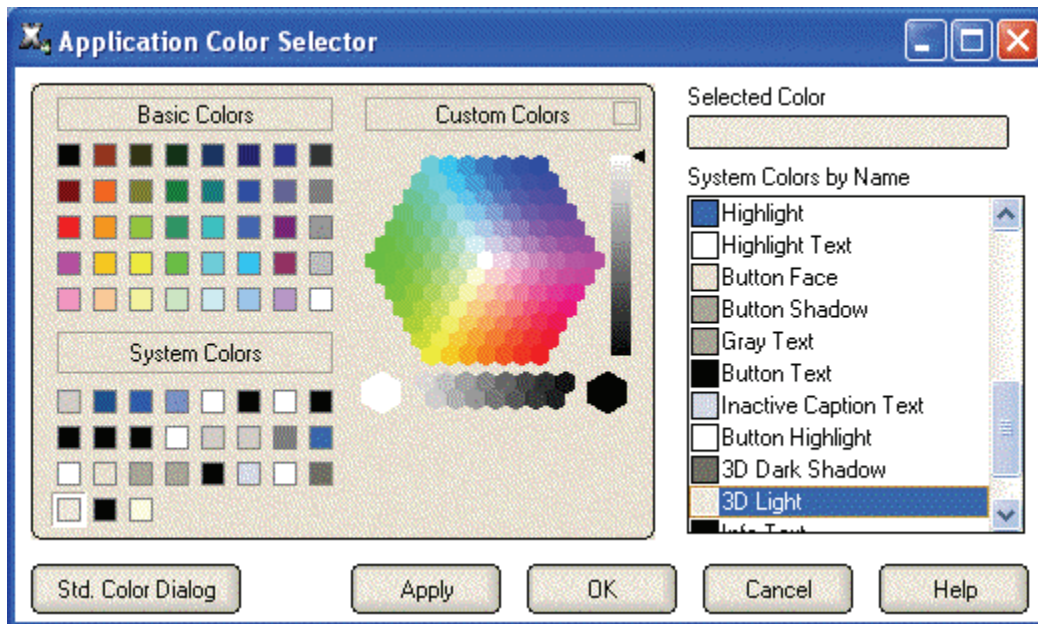
Cancel

Use this button to reject any changes and exit the window.

Application Color Selector

The color selections on this window are divided into three groups: A basic 40-color set, the standard Windows 27 System Colors and a custom color area for gradient color selection. There is also a list box of System Colors by Name for selection.

Note: System Colors changed from the Windows Control Panel will affect the System Colors made available on this window.

**Std. Color Dialog**

Click this button to use the traditional **Color** dialog for selection.

Apply

Click this button to apply any changes without exiting the selection dialog.

OK

Click this button to accept any changes and exit the window.

Cancel

Click this button to discard any changes and exit the window.

Lock Config. Initial Password window

This dialog is used to supply an initial password that will be required to access the configuration controls.

New Password

Enter a 1-8-character password. All keyboard characters are allowed.

Reenter New Password to Confirm

Reenter the same password in order to confirm the entry. This entry is required when the **New Password** entry is specified.

OK

Press this button to accept the entries on this dialog and continue.

Cancel

Press this button to cancel any entries made on this dialog.

Unlock Config. Password window

This dialog is used to supply the password that will enable the configuration controls. The dialog may also be used to change an existing password.

Enter Password

Enter the password required to unlock (enable) the configuration controls.

New Password

To change the password, enter the new password in this box. This entry is optional.

Reenter New Password to Confirm

Reenter the same password in order to confirm the entry. This entry is required when the **New Password** entry is specified.

OK

Press this button to accept the entries on this dialog and continue.

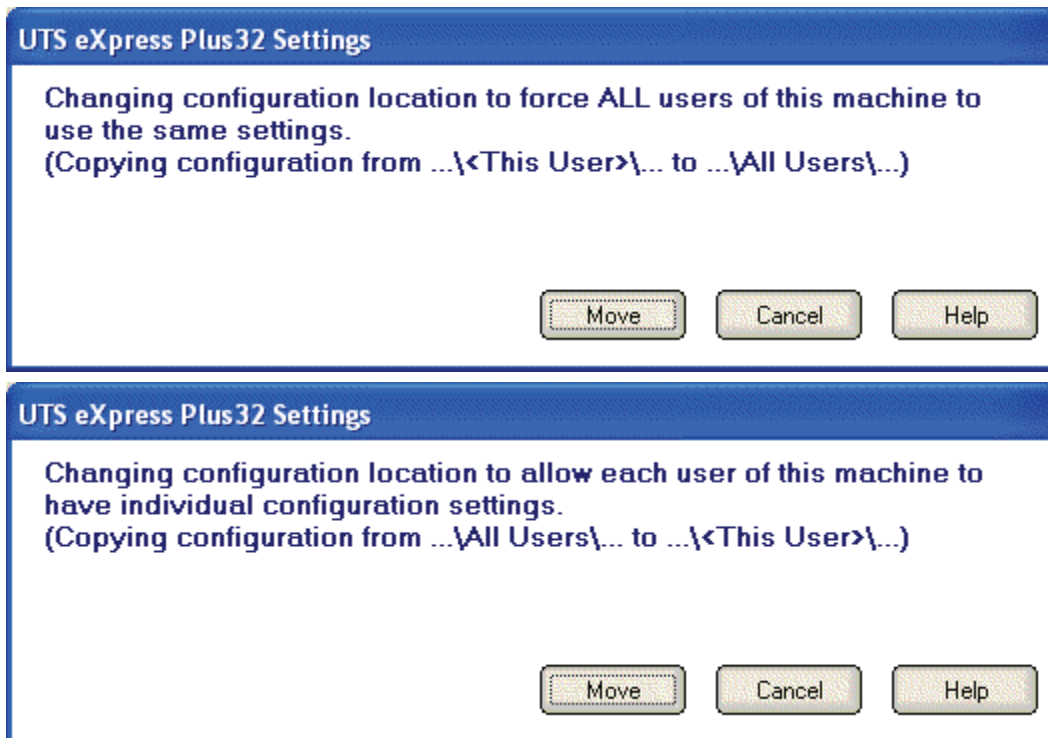
Cancel

Press this button to cancel any entries made on this dialog.

T27 eXpress IT Settings

This dialog is used to switch the location of the T27 eXpress IT configuration settings. The settings may be stored in such a manner as to allow multiple users of a single Windows system to maintain their individual configurations. When individual configurations are to be maintained (the default), the settings are placed under C:\Documents and Settings\\Application Data. On the other hand, if it is desirable for all users of the system to use the same configuration, an option is available to move those settings to the common location, C:\Documents and Settings\All Users\Application Data.

Note: "<This User>" will be the user-id used to log on to Windows.



The dialog acts as a toggle between <This User> and All Users; i.e., if your settings are currently stored in <This User>, the message will indicate that they be moved to All Users; if they are in All Users, the move would be to <This User>.

Delete Source Settings

Check this box to delete the settings in their former location. If this box is not checked, the settings will remain in their old location but will NOT be used or updated in any way.

Set

After selecting an option above, click this button to complete the move.

Cancel

Press this button to ignore any selections and return to the previous dialog.

How to ...

Selecting with the Mouse

All selections discussed in this section are made with a single click of the left mouse button. For example the instruction, "select **Print Screen** from the **File** menu," implies that the following actions should be taken:

1. Move the mouse cursor over the word, **File**, on the menu bar.
2. Click the left mouse button once to reveal the menu.
3. Move the mouse cursor over the **Print Screen** selection.
4. Press the left mouse button again to complete the instruction.

Note: Left and right, mouse button actions may be reversed (run the **Mouse** icon/program in the Windows **Control Panel**).

Many of the menu selections also have corresponding buttons. These buttons are conveniently located on a toolbar immediately below the menu bar. These buttons represent the more frequently executed T27 eXpress IT commands or selections.



Where appropriate, shortcut keys are shown in parentheses and toolbar buttons are shown in the right margin of the discussions below.

Running without the Control Panel

You may run T27 eXpress IT without the control panel being visible using the NCP command line option as follows:

```
"c:\Program Files\KMSystems\ T27eXpressIT \3.0\ T27eXpressIT.exe" NCP
```

To run with the NCP option, you must first run without it and configure at least one environment to automatically open at start-up. To configure:

1. Start T27 eXpress IT without the NCP option.
2. Click the **Configure T27 eXpress IT** button  on the control panel.
3. Select and configure an environment as desired.
4. Check the **Open Environment on Start-up**
5. Repeat Steps 3 and 4 if additional environments are required.
6. Click the **OK** button.
7. Click the **Exit** button  on the control panel.


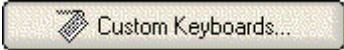
Finally, add the NCP command line option to the **Target** entry of the **T27 eXpress IT** shortcut as follows:

1. Right click on the **T27 eXpress Plus** icon. From the Windows Task Bar, this icon is on the **Start | Programs | T27 eXpress Plus** menu.
2. Select **Properties**.
3. Change the **Target** entry.

Note: When all environments are closed by the user, T27 eXpress IT will automatically exit.

Configuring T27 Keys

To change a T27 key, follow this procedure:

1. Click the **Configure** button  on the T27 eXpress IT Control Panel.
2. After selecting a screen tab, press the **Custom Keyboards** button  on the **Other Settings** tab. The **eXpress Custom Keyboard Layouts** window will appear.
3. Select the keyboard layout you wish to configure from the **Keyboard Name** drop-down list box, or a new layout using the **New Keyboard** button to the right. Note: Layouts are related via a named keyboard and associated with a particular screen on the **Other**

Settings tab. In this manner, it is possible for each configured screen to have its own unique keyboard layout or share a layout with other screens.

4. Select a key from the list box under **Terminal Keys**.
5. Press the desired key or key combination (any key plus **Alt**, **Ctrl** and/or **Shift**) on the visual keyboard.
6. Press the **Set key assignment** button.
7. If a key is already defined, a message window will appear allowing you to replace (**Redefine**) the existing definition or **Add** an additional definition. Also, if a key combination is already assigned to another key action, you will get an error. In that case you will need to "**Undefine**" that other key action first.
8. Press the **OK** button on the **eXpress Custom Keyboard Layouts** window.
9. Back on the **Other Settings** tab, select your keyboard from the Select Custom Keyboard Layout drop-down list box. Note: You may have to exit the Configuration window and re-enter to see the name of your keyboard in the list box.
10. Repeat steps 2 through 8 for each screen desired.
11. Press the **OK** button on the **T27 eXpress IT Configuration** window.

Recall Recent Input

On occasion, you may wish recall or retransmit a line of input to the host, and that line no longer appears on the screen. T27 eXpress IT retains a list of the 200 most recent lines sent to the host when not in forms mode. The following procedure outlines the steps required to use this feature:

1. Position the cursor at the point on the screen where you wish the line to be repainted.
2. Press **Ctrl+Up Arrow** (this key is configurable, see Configuring T27 Keys) or select **Input Recall** from the **Edit** window.
3. With the mouse, select the desired line from the list box provided.
4. Click the **Transmit** button to paint the line and transmit it to the host (double-clicking the line will also cause a transmit). If you wish to alter the line before transmitting, click on the **Paste** button.

Note: This feature is particularly useful when the recall line is lengthy and you wish to avoid having to retype the entire line.

Displaying T27 eXpress IT Keyboard Definitions

At times, you may wish to perform standard T27 terminal functions through the keyboard such as Clear Home, Delete Character Page, etc. An easy way to see the keyboard key sequences required to perform these T27 terminal functions is through the display of the **Keyboard Help** window. To view this window, select **Show Keyboard Help Window** from the **View** menu.

Execute any key (**T27 key** or **Keyboard Key Sequence**) in the window's list box by double clicking on it, or leave the window displayed as a reference to key sequences required from the keyboard.

With the **Keyboard Help** window displayed, you may reposition the cursor with two left mouse clicks anywhere in a T27 eXpress IT screen.

To keep the **Keyboard Help** window completely visible while working on a T27 eXpress IT screen, check the **Stay on top** box.

Miscellaneous


Command Line Options

The following are the T27 command line options. They are NOT case sensitive and are separated by spaces:

- NL** = No Logo (Splash Screen)
- NCP** = No Control Panel
- SMAx** = Show Screens Maximized
- TRANSTRACE** = Transport Trace On Start
- MULTI_INST** = Allow multiple instances of program

Font Limitations

The ability to increase/decrease font size by a single point only works properly when using scalable fonts like the True Type font, Courier New (installed with Windows). Non-scalable fonts have a fixed number of point sizes available (e.g., 6, 9, 11, 14, etc.) and are missing several point sizes (e.g., 7, 8, 10, 12, 13). Consequently, T27 eXpress IT will be unable to increment or decrement to the missing sizes. To select a different font, follow this procedure:

1. Click on the **Configure T27 eXpress IT Options** button  on the T27 eXpress IT Control Panel.
2. Select the desired screen.
3. Select the **Other Settings** tab.
4. Click the **Custom Appearance** button.
5. Click the **Screen Font** button.
6. Select the desired font and font style.
7. Press the **OK** button.

Note: All of the True Type fonts are scalable.

Technical Support

If you are experiencing difficulties configuring T27 eXpress IT and need assistance, please contact the person responsible for maintaining T27 eXpress IT at your site. If you are having trouble connecting to a host mainframe, please consult the person(s) responsible for maintaining communications at your site. If difficulties persist, you may reach the Technical Support Group at KMSYS Worldwide, Inc., through one of the following:

Internet E-mail Support – support@kmsys.com
Telephone Support – (770) 635-6363
Web Site – www.kmsys.com
Main Number – (770) 635-6350
Facsimile – (770) 635-6351

Index

A		File menu	2
Add LF to Return	7	Font Limitations	41
Add or Redefine Key	24	Force ALL Users of This Machine to Use Same Settings	37
Adjust Font	2	Forms Mode	7
Advance Page	7	G	
Allow Unique Settings for Each User of the Machine	37	Graphic Keyboard	21
Alternate Delimiters	7	H	
Application Color Scheme Preferences	32	Help menu	2
Application Color Selector	35	Hold in RCV Mode	7
Auto Hide	1	I	
Auto Scaling Mode	17	Increase Vertical Spacing	2
Automatic Field Advance	7	Input Recall	2
Auto-save Pages	7	Insert Space in Insert Mode	7
B		K	
Beep Alarm Sound	7	Keep on Top	1
Blinking Cursor	7	Keyboard Options	7
C		L	
Character Translation Edit	31	Left Character (hex)	7
Clear Entire Screen	7	Line Clear	7
Clear Fields Only	7	Lock Config. Initial Password window	36
Clear Function	7	M	
Clear Trace Window	2	Minimize All	1
Color Palette	17	Mouse	39
Color Settings	17	N	
Command Line Options	41	Numeric-Only	7
Configuring T27 Keys	39	O	
Control Panel	1	Open This Environment on Start	7
Convert CR to CRLF	7	Options menu	2
Convert LF to LFCR	7	P	
Copy/Cut/Paste popup menu	2	Position Cursor	28
D		R	
DataComm Options	7	Real Blink	7
DC1 Function	7	Recall Recent Input	40
DC2 Function	7	Right Character (hex)	7
Decrease Vertical Spacing	2	Right Justified is Numeric-Only	7
Displaying T27 eXpress IT Keyboard Definitions	40	Running without the Control Panel	39
E		S	
Edit Macro	26	Save Settings Now	1
Edit Prompt for Text	28	Save Settings on Exit	7, 17
Environments tab	7	Select Automatic Sign-on Script	7
eXpress Custom Keyboard Layout	21	Select Color for Attribute	17
eXpress Custom Terminal Screen Appearance	17	Select Color/Font Scheme	7
eXpress IT Macro Manager	24	Select Connection Route	7
F		Select Terminal Key Function	29
FCC Map	2	Select Tool Bar	7

Selecting with the Mouse	39	Technical Support	41
Send To ...	6	Terminal Keyboard Key Names	21
Set Key Assignment	21	Text String	29
Show Control Characters	2	Timed Wait	29
SO/SI Extended Characters	7	Toggle Forms	7
SO/SI Translation	7	Trace	2
SOH Clears Forms Mode	7	Transmit Full Page in Forms Mode	7
SOH Clears Screen	7	Transmit Line at a Time	7
Specify Sends Hex	7	Type a Key Sequence	21
Specify Sends Page Number	7	U	
Start in UPPERCASE Only Mode	7	Unlock Config. Password window	37
Stay in RCV	7	UPPERCASE Only Mode	7
T		V	
T27 Character Translation Configuration	30	Video Options	7
T27 eXpress IT Configuration	7	Visible Delimiters	7
T27 eXpress IT Control Panel	1	W	
T27 eXpress IT Screen	2	Wait for String	29
T27 eXpress IT Settings	37	Window menu	2
Tab Stops	7		